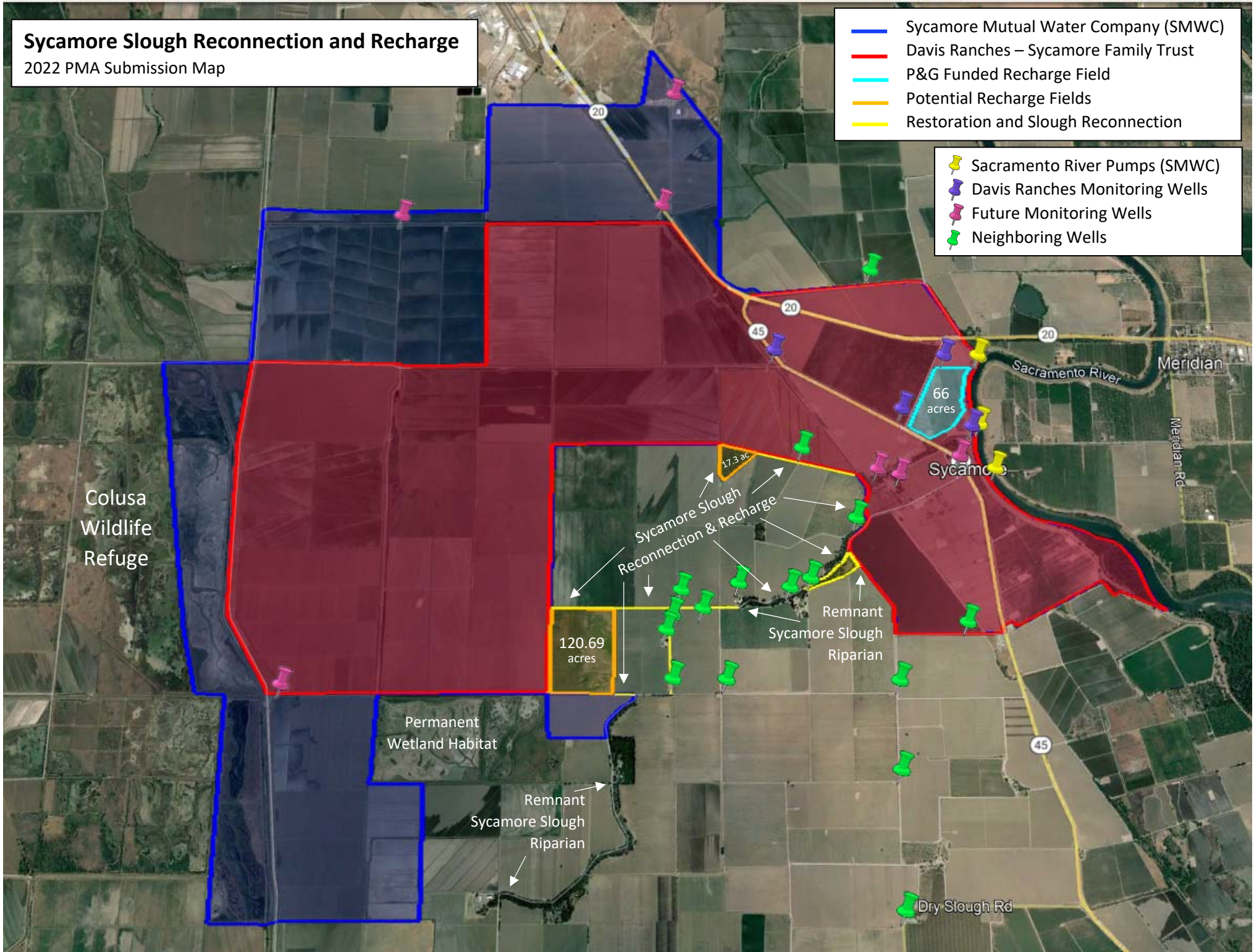


Sycamore Slough Reconnection and Recharge

2022 PMA Submission Map

- Sycamore Mutual Water Company (SMWC)
- Davis Ranches – Sycamore Family Trust
- P&G Funded Recharge Field
- Potential Recharge Fields
- Restoration and Slough Reconnection

- 📍 Sacramento River Pumps (SMWC)
- 📍 Davis Ranches Monitoring Wells
- 📍 Future Monitoring Wells
- 📍 Neighboring Wells



SAGBI | Soil Agricultural Groundwater Banking Index

About

Factors

Map Settings

Map Settings

Map overlay:

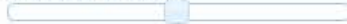
Unmodified

Modified

None

- Unmodified overlay shows SAGBI suitability groups when not accounting for modifications by deep tillage.
- Modified overlay is **theoretical**; it shows SAGBI suitability groups when assuming that **all** soils with restrictive layers have been modified by deep tillage.

Overlay transparency:



Location:

Use My Current Location

- OR -

Enter a location:

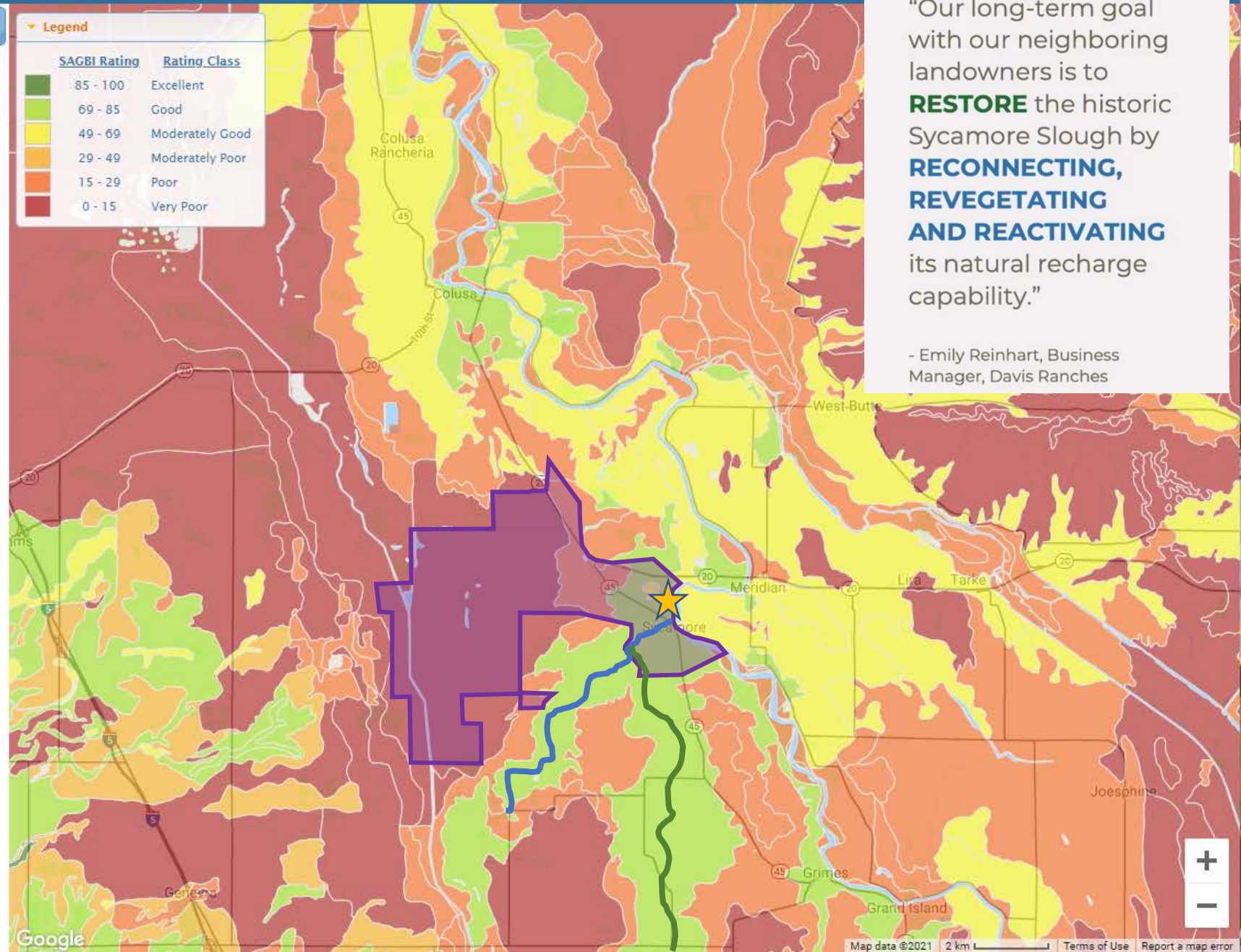
Go

Locations may be entered as:

- City, state
- Zip code
- Latitude, longitude (e.g. 38.55, -121.74)

Legend

SAGBI Rating	Rating Class
85 - 100	Excellent
69 - 85	Good
49 - 69	Moderately Good
29 - 49	Moderately Poor
15 - 29	Poor
0 - 15	Very Poor



“Our long-term goal with our neighboring landowners is to **RESTORE** the historic Sycamore Slough by **RECONNECTING, REVEGETATING AND REACTIVATING** its natural recharge capability.”

- Emily Reinhart, Business Manager, Davis Ranches

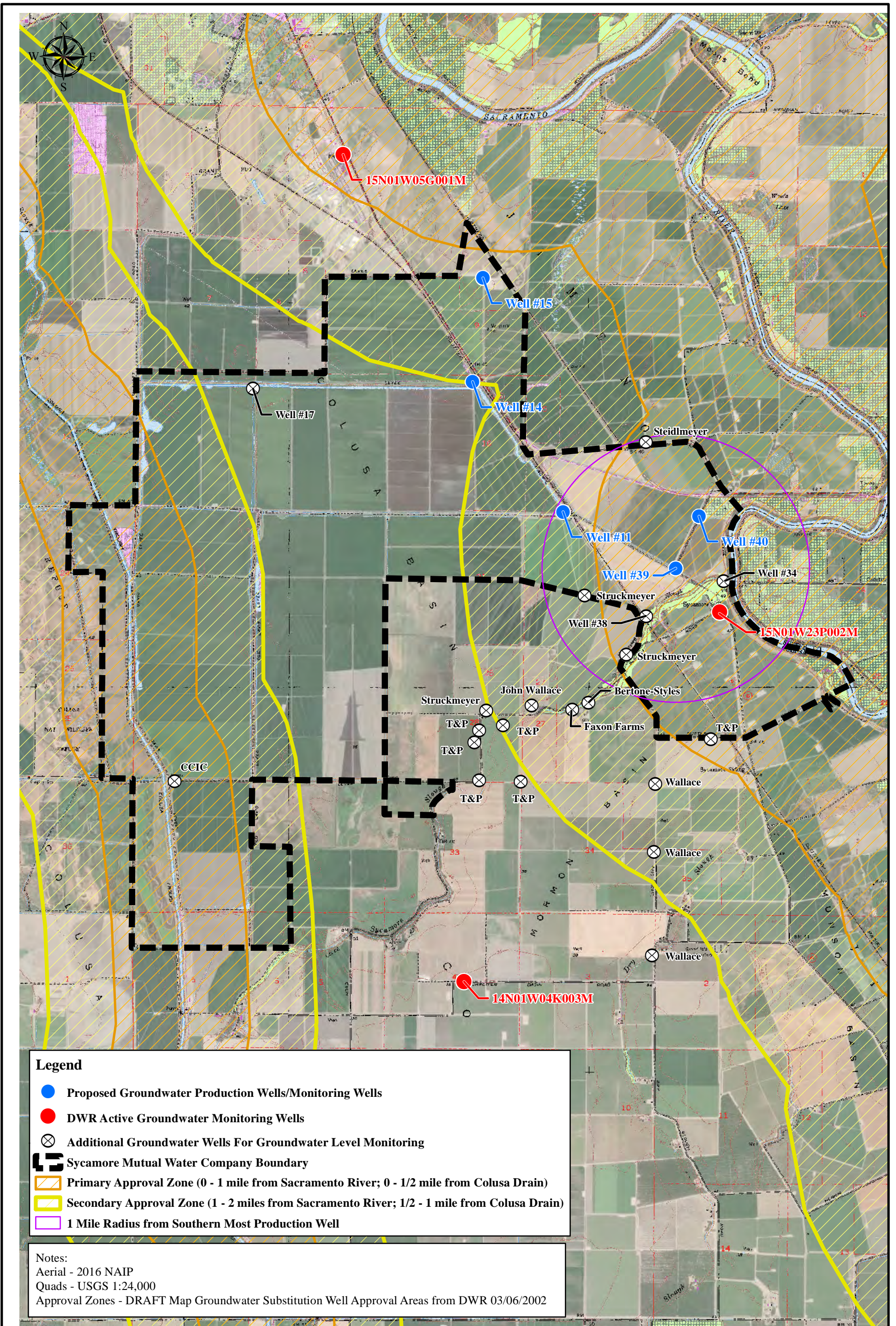
★ Project Site – Field 2

— Sycamore Mutual Water Co.

— Historic Sycamore Slough

— Historic Dry Slough

Google



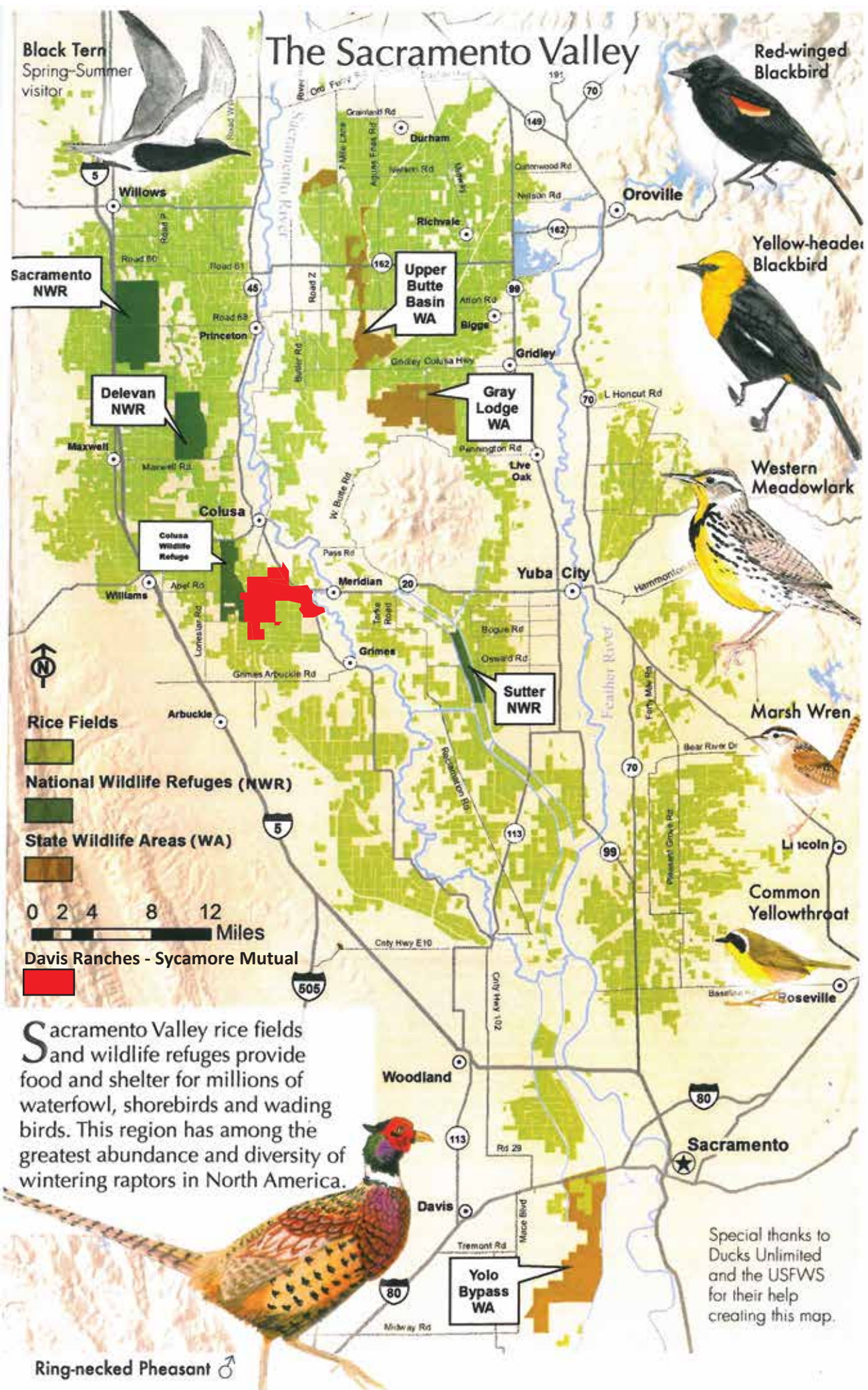
Legend

- Proposed Groundwater Production Wells/Monitoring Wells
- DWR Active Groundwater Monitoring Wells
- ⊗ Additional Groundwater Wells For Groundwater Level Monitoring
- ▬ Sycamore Mutual Water Company Boundary
- ▭ Primary Approval Zone (0 - 1 mile from Sacramento River; 0 - 1/2 mile from Colusa Drain)
- ▭ Secondary Approval Zone (1 - 2 miles from Sacramento River; 1/2 - 1 mile from Colusa Drain)
- 1 Mile Radius from Southern Most Production Well

Notes:

Aerial - 2016 NAIP
Quads - USGS 1:24,000
Approval Zones - DRAFT Map Groundwater Substitution Well Approval Areas from DWR 03/06/2002

The Sacramento Valley



Black Tern
Spring-Summer visitor

Red-winged Blackbird

Sacramento NWR

Upper Butte Basin WA

Oroville

Yellow-headed Blackbird

Delevan NWR

Gray Lodge WA

Western Meadowlark

Colusa Wildlife Refuge

Sutter NWR

Marsh Wren

Rice Fields

National Wildlife Refuges (NWR)

State Wildlife Areas (WA)

0 2 4 8 12 Miles

Davis Ranches - Sycamore Mutual

Common Yellowthroat

Sacramento Valley rice fields and wildlife refuges provide food and shelter for millions of waterfowl, shorebirds and wading birds. This region has among the greatest abundance and diversity of wintering raptors in North America.

Ring-necked Pheasant ♂

Special thanks to Ducks Unlimited and the USFWS for their help creating this map.