

Exhibits A-1 – A-8 Descriptions and B-1 – B-8 Maps

Annexations to the Colusa County Water District

1.	Frank and Vada Ruggieri Meyers and Charter, Inc.	018-180-041	92.56 acres
2.	Michael and Kirsten Doherty	018-250-002	320.00 acres
3.	Sachreiter Ranch LLC	018-270-006	80.00 acres
4.	Thomas Charter	018-280-022 018-270-019	319.47 acres
5.	Michael and Ellen Vorhees Jeffery Charter Daniel and Irma Grajedo, David Bisek, Michael Charter Jerome and Irene Family Trust	021-060-068, 109 110,111,155 and 156	175.46 acres
6.	Henry Struckmeyer Et Ux	021-290-083	318.95 acres
7.	Bruce Myers and Jeffery Charter	021-320-001,014 & 031	248.98 acres
8.	Don Peart Ranch	051-010-032	51.97 acres
		TOTAL ACRES:	1,607.39

A-1

Attachment No. 2017-0001
Attachment to Colusa County Water District

LEGAL DESCRIPTION
for
Frank and Vada Ruggieri
and
Myers and Charter Incorporated

All that certain real property situated in a portion of Sections 22, Township 14 North, Range 2 West M.D.M. within the County of Colusa, State of California, described as follows:

Beginning at the Center of Section 22;

Thence, (1) South 00°02'55" East, a distance of 2673.90' feet;

Thence, (2) North 89°59'54" West, a distance of 808.14' feet;

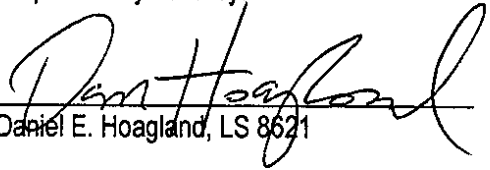
Thence, (3) North 27°41'29" West, a distance of 3018.25' feet;

Thence, (4) North 89°57'56" East, a distance of 2208.48' feet to the **Point of Beginning**

The above described parcel of land contains an area of 92.56 acres more or Less

For assessment purposes only. This description of land is not a legal property description as defined in the Subdivision Map Act and may not be used as the basis for an offer for sale of the land described

Prepared July 2017 by;


Daniel E. Hoagland, LS 8621



Apn 018-180-040 and 041
Colusa County Water District
Job No. 16-141
Revised July 2017

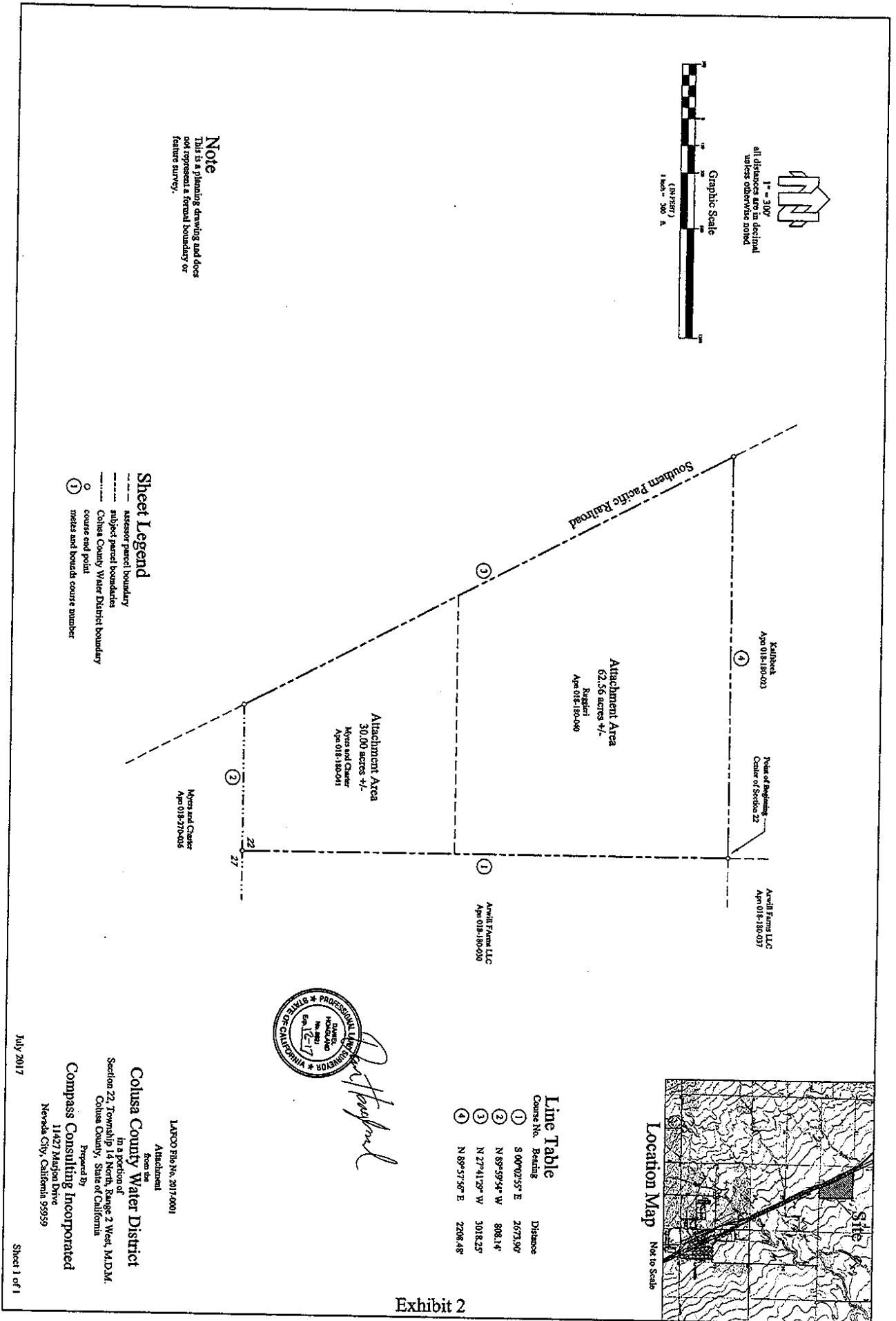


Exhibit 2

A 2

Attachment No. 2017-0001
Attachment to Colusa County Water District

LEGAL DESCRIPTION
for
Michael and Kirsten Doherty

All that certain real property situated in a portion of Sections 26, Township 14 North, Range 3 West M.D.M. within the County of Colusa, State of California, described as follows:

Beginning at the Southwest corner of Section 26;

Thence, (1) North, a distance of 5280.00' feet;

Thence, (2) East, a distance of 2640.00' feet;

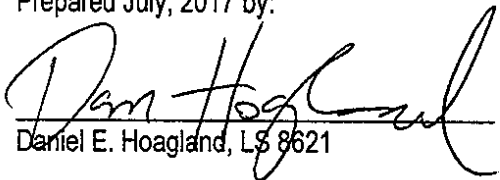
Thence, (3) South, a distance of 5280.00' feet;

Thence, (4) West, a distance of 2640.00' feet to the **Point of Beginning**

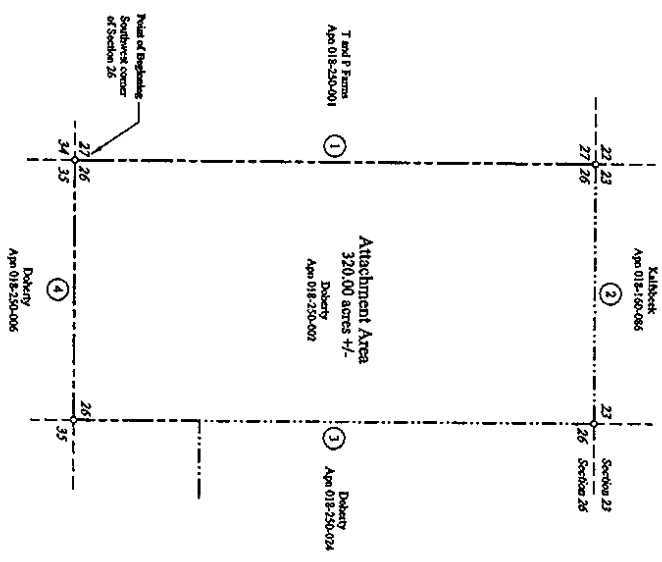
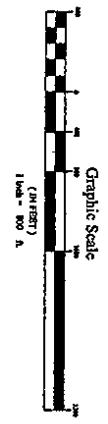
The above described parcel of land contains an area of 320.00 acres more or Less

For assessment purposes only. This description of land is not a legal property description as defined in the Subdivision Map Act and may not be used as the basis for an offer for sale of the land described

Prepared July, 2017 by:

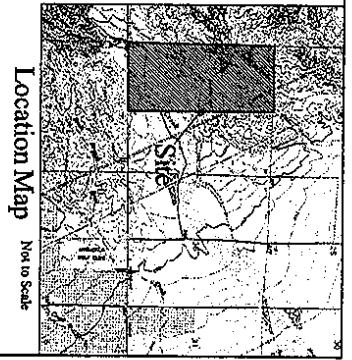

Daniel E. Hoagland, L.S. 8621





Note
This is a planning drawing and does not represent a formal boundary or feature survey.

- Sheet Legend**
- assessor parcel boundary
 - subject parcel boundaries
 - Colusa County Water District boundary
 - course end point
 - ① miles and bounds course number



Line Table

Course No.	Bearing	Distance
①	North	5280.00'
②	East	2640.00'
③	South	5280.00'
④	West	2640.00'



[Handwritten Signature]

LAPCO File No. 2017-0001
Attachment
Section 26
Colusa County Water District
In a portion of
Section 26, Township 14 North, Range 3 West, M.D.M.
Colusa County, State of California
Prepared by
Compass Consulting Incorporated
11427 Mayson Drive
Nevada City, California 95959

A 3

Attachment No. 2017-0001
Attachment to Colusa County Water District

LEGAL DESCRIPTION
for
Sachreiter Ranch LLC

All that certain real property situated in a portion of Section 35, Township 14 North, Range 2 West M.D.M. within the County of Colusa, State of California, described as follows:

Beginning at the North Quarter corner of Section 35;

Thence, (1) South 89°43'13" East, a distance of 2664.24' feet;

Thence, (2) South 00°24'08" West, a distance of 1330.16' feet;

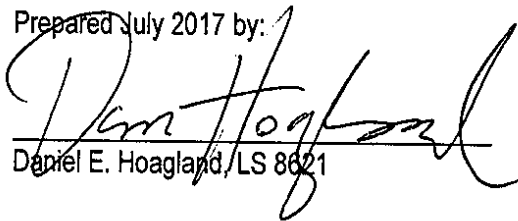
Thence, (3) South 89°48'28" West, a distance of 2664.25' feet;

Thence, (4) North 00°24'09" East, a distance of 1334.22' feet to the **Point of Beginning**

The above described parcel of land contains an area of 80.00 acres more or Less

For assessment purposes only. This description of land is not a legal property description as defined in the Subdivision Map Act and may not be used as the basis for an offer for sale of the land described

Prepared July 2017 by:

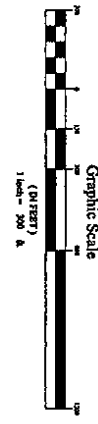

Daniel E. Hoagland / LS 8621



Apn 018-270-006
Colusa County Water District
Job No. 16-141
Revised July 2017

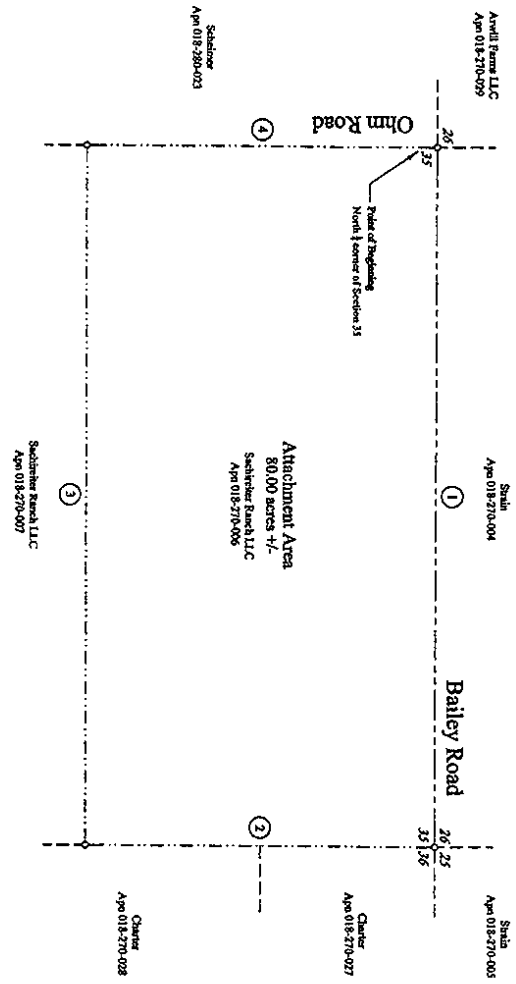


1" = 310'
all distances are in decimal
unless otherwise noted

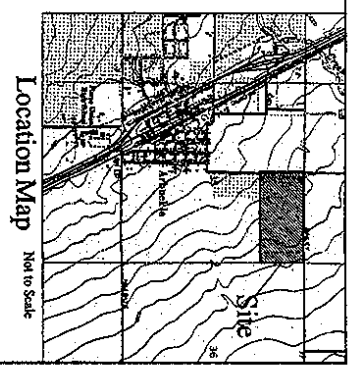


Pen Hooper
Surveyor
No. 12-17
Professional Seal
PEN HOOPER
SURVEYOR
No. 12-17
STATE OF CALIFORNIA

Note
This is a planning drawing and does
not represent a formal boundary or
feature survey.



- Sheet Legend**
- successor parcel boundary
 - - - - - subject parcel boundaries
 - - - - - Colusa County Water District boundary
 - course end point
 - ① water and bounds course number



Line Table

Course No.	Bearing	Distance
①	S 89°41'13" E	2664.26'
②	S 00°24'08" W	1330.16'
③	N 89°48'28" W	2664.25'
④	N 00°24'09" E	1334.22'

LARCO File No. 2017-0001
Attachment
from the
Colusa County Water District
in a portion of
Section 35, Township 14 North, Range 2 West, M.D.M.
Colusa County, State of California
Prepared by
Compass Consulting Incorporated
11427 Madrona Drive
Nevada City, California 95959

July 2017

Sheet 1 of 1

A-4

Attachment No. 2017-0001
Attachment to Colusa County Water District

LEGAL DESCRIPTION
for
Thomas Charter

All that certain real property situated in a portion of Sections 27 and 28, Township 14 North, Range 2 West M.D.M. within the County of Colusa, State of California, described as follows:

Beginning at the Southeast corner of Section 28;

Thence, (1) North 89°31'15" West, a distance of 2649.85' feet;

Thence, (2) North 01°05'28" East, a distance of 409.80' feet;

Thence, (3) North 54°40'59" East, a distance of 188.24' feet;

Thence, (4) North 74°41'58" East, a distance of 157.88' feet;

Thence, (5) North 57°09'22" East, a distance of 110.58' feet;

Thence, (6) North 79°41'58" East, a distance of 282.50' feet;

Thence, (7) South 70°57'20" East, a distance of 207.61' feet;

Thence, (8) North 50°59'12" East, a distance of 513.91' feet;

Thence, (9) North 05°15'59" West, a distance of 71.66' feet;

Thence, (10) North 02°21'17" East, a distance of 76.95' feet;

Thence, (11) North 02°21'17" East, a distance of 1578.69' feet;

Thence, (12) South 88°42'50" East, a distance of 1379.77' feet;

Thence, (13) South 88°21'24" East, a distance of 2866.20' feet

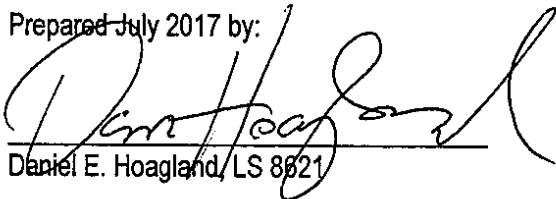
Thence, (14) South 25°58'27" East, a distance of 2976.44' feet;

Thence, (15) North 88°27'49" West, a distance of 4241.07' feet to the **Point of Beginning**

The above described parcel of land contains an area of 319.47 acres more or Less

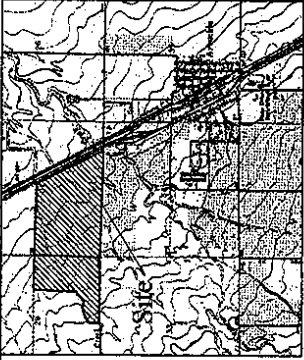
For assessment purposes only. This description of land is not a legal property description as defined in the Subdivision Map Act and may not be used as the basis for an offer for sale of the land described

Prepared July 2017 by:


Daniel E. Hoagland, LS 8621



Apn 018-260-022 and 018-270-019
Colusa County Water District
Job No. 16-141
Revised July 2017

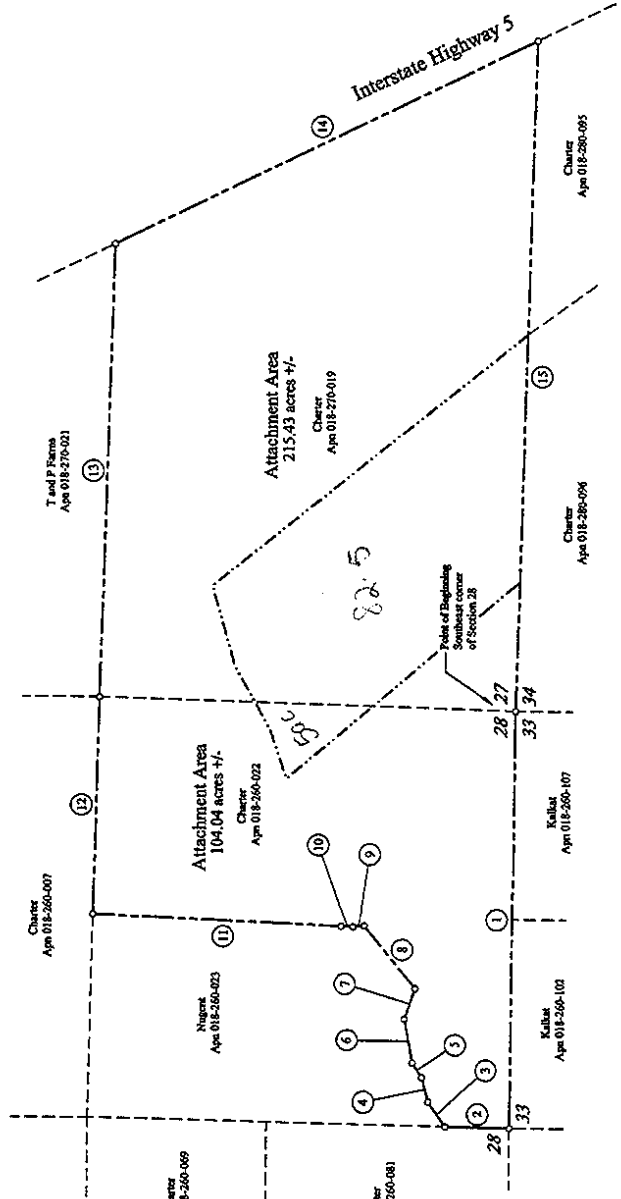


Location Map Not to Scale

Line Table

Course No.	Bearing	Distance
1	N 89°31'15" W	2649.85'
2	N 01°02'28" E	409.80'
3	N 54°40'59" E	188.24'
4	N 74°41'58" E	157.88'
5	N 57°06'22" E	110.58'
6	N 79°41'58" E	282.50'
7	S 70°57'20" E	207.61'
8	N 50°59'12" E	513.91'
9	N 05°15'59" W	71.66'
10	N 02°21'17" E	76.95'
11	N 02°21'17" E	1578.69'
12	S 88°42'50" E	1379.77'
13	S 88°21'24" E	2866.30'
14	S 25°58'27" E	2976.44'
15	N 88°27'49" W	4241.07'

Exhibit 2



LAPCO File No. 2017-0001
Attachment from the

Colusa County Water District

in a portion of Sections 27 and 28, Township 14 North, Range 2 West, M.D.M., Colusa County, State of California

Compass Consulting Incorporated

11427 Marjon Drive
Nevada City, California 95959

Sheet 1 of 1

July 2017

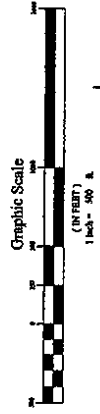
Sheet Legend

- subject parcel boundaries
- - - - - assessor parcel boundaries
- - - - - Colusa County Water District boundary
- o course end point
- ① notes and bounds course number

Note
This is a planning drawing and does not represent a formal boundary or feature survey.



1" = 500'
all distances are in feet, decimal unless otherwise noted



A-5

Attachment No. 2017-0001
Attachment to Colusa County Water District

LEGAL DESCRIPTION

for

**Michael and Ellen Voorhees, Jeffery Charter, Daniel and Irma Grajedo, David Bisek,
Michael Charter and Jerome and Irene Family Trust**

All that certain real property situated in a portion of Sections 5, Township 13 North, Range 2 West M.D.M. within the County of Colusa, State of California, described as follows:

Commencing at the Southeast corner of Section 5;

Thence, (1) North 06°23'29" West, a distance of 1744.42' feet to the **True Point of Beginning**

Thence, (2) South 88°00'44" West, a distance of 147.00' feet;

Thence, (3) South 45°58'43" West, a distance of 169.88' feet;

Thence, (4) South 79°25'38" West, a distance of 90.98' feet;

Thence, (5) South 41°19'31" West, a distance of 194.85' feet;

Thence, (6) North 67°31'39" West, a distance of 87.04' feet;

Thence, (7) North 18°16'44" East, a distance of 146.15' feet;

Thence, (8) North 49°47'17" West, a distance of 34.02' feet;

Thence, (9) South 83°25'40" West, a distance of 255.98' feet;

Thence, (10) South 22°22'31" West, a distance of 113.89' feet;

Thence, (11) North 47°45'22" West, a distance of 139.10' feet;

Thence, (12) North 76°07'28" West, a distance of 76.02' feet;

Thence, (13) South 48°41'50" West, a distance of 94.94' feet

Thence, (14) South 83°54'40" West, a distance of 43.00' feet;

Thence, (15) North 70°33'09" West, a distance of 301.00' feet;

Thence, (16) South 42°16'12" West, a distance of 133.62' feet;

Thence, (17) South 61°14'49" West, a distance of 110.88' feet;

Thence, (18) South 35°26'25" West, a distance of 80.20' feet;

Thence, (19) North 82°25'13" West, a distance of 144.53' feet;

Thence, (20) South 61°50'24" West, a distance of 365.83' feet;
Thence, (21) South 45°40'34" West, a distance of 80.37' feet;
Thence, (22) North 72°28'47" West, a distance of 141.32' feet;
Thence, (23) South 25°39'31" West, a distance of 155.80' feet
Thence, (24) North 83°54'27" West, a distance of 69.53' feet;
Thence, (25) North 81°18'00" West, a distance of 92.94' feet;
Thence, (26) South 59°27'51" West, a distance of 96.01' feet;
Thence, (27) North 58°42'14" West, a distance of 131.80' feet;
Thence, (28) South 85°36'17" West, a distance of 154.03' feet;
Thence, (29) South 14°53'50" West, a distance of 64.33' feet;
Thence, (30) South 71°11'54" West, a distance of 64.79' feet;
Thence, (31) North 50°57'13" West, a distance of 78.40' feet;
Thence, (32) North 56°09'30" West, a distance of 194.00' feet;
Thence, (33) North 84°58'36" West, a distance of 423.88' feet
Thence, (34) West, a distance of 371.92' feet;
Thence, (35) South 47°33'28" West, a distance of 116.68' feet;
Thence, (36) South 74°55'30" West, a distance of 150.81' feet;
Thence, (37) South 82°44'33" West, a distance of 130.20' feet;
Thence, (38) West, a distance of 215.26' feet;
Thence, (39) North 74°30'44" West, a distance of 156.36' feet;
Thence, (40) South 64°53'03" West, a distance of 113.27' feet;
Thence, (41) South 39°21'17" West, a distance of 117.81' feet;
Thence, (42) South 86°18'30" West, a distance of 181.70' feet;
Thence, (43) North 01°15'00" West, a distance of 2349.50' feet
Thence, (44) North 87°35'00" East, a distance of 1314.12' feet
Thence, (45) South 01°10'45" East, a distance of 645.10' feet;

Thence, (46) North 87°01'17" East, a distance of 2640.38' feet;

Thence, (47) South 00°47'30" East, a distance of 636.23' feet;

Thence, (48) North 86°25'44" East, a distance of 1323.97' feet

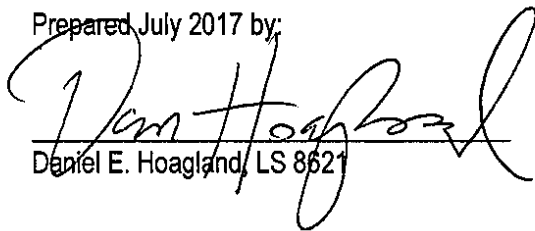
Thence, (49) South 00°28'37" East, a distance of 644.15' feet;

Thence, (50) South 64°14'21" West, a distance of 198.79' feet to the **True Point of Beginning**

The above described parcel of land contains an area of 175.46 acres more or Less

For assessment purposes only. This description of land is not a legal property description as defined in the Subdivision Map Act and may not be used as the basis for an offer for sale of the land described

Prepared July 2017 by:

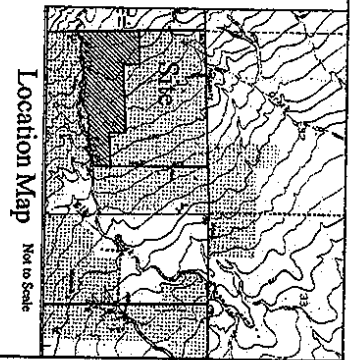

Daniel E. Hoagland, LS 8621



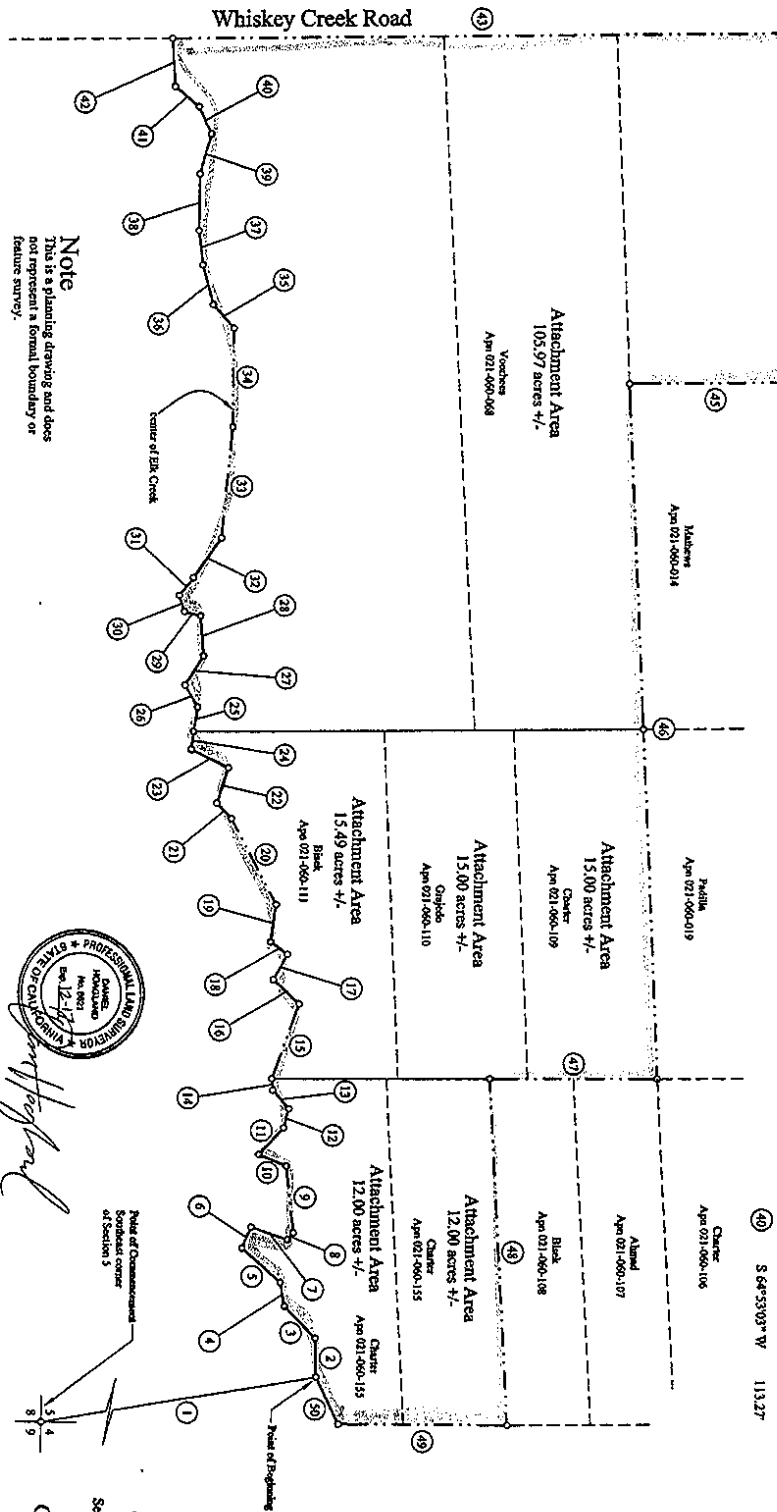


Graphic Scale
1" = 300'
all distances are in decimal
unless otherwise noted
1 inch = 300 feet

Course No.	Bearing	Distance
1	N 06°23'25" W	1744.42'
2	S 88°00'40" W	147.00'
3	S 45°38'43" W	169.88'
4	S 79°25'28" W	90.98'
5	S 41°19'31" W	194.85'
6	N 67°31'39" W	87.04'
7	N 10°16'44" E	146.15'
8	N 49°47'17" W	34.02'
9	S 83°25'40" W	255.98'
10	S 22°23'31" W	113.89'
11	N 47°45'22" W	139.10'
12	N 76°07'28" W	76.02'
13	S 48°41'50" W	94.94'
14	S 83°54'40" W	43.00'
15	N 70°33'09" W	301.00'
16	S 42°16'12" W	133.62'
17	N 61°14'49" W	110.88'
18	S 35°26'25" W	80.20'
19	N 82°23'13" W	144.53'
20	N 67°31'39" W	365.83'
21	S 45°40'34" W	80.37'
22	N 72°28'47" W	141.32'
23	S 25°39'31" W	155.87'
24	N 83°54'27" W	69.33'
25	N 81°18'00" W	92.94'
26	S 59°27'51" W	96.01'
27	N 58°42'14" W	131.80'
28	S 85°36'17" W	154.03'
29	S 14°53'50" W	64.33'
30	S 71°11'54" W	64.75'
31	N 50°57'13" W	78.40'
32	N 56°09'20" W	194.00'
33	N 84°58'26" W	423.88'
34	West	371.92'
35	S 47°37'28" W	116.68'
36	S 74°55'50" W	130.20'
37	S 82°44'33" W	150.81'
38	West	215.26'
39	N 74°30'44" W	156.36'
40	S 64°53'03" W	113.27'



- 41 S 39°21'17" W 117.81'
- 42 S 86°18'30" W 181.70'
- 43 N 01°13'00" W 2349.50'
- 44 N 87°35'50" E 1314.12'
- 45 S 01°10'45" E 645.10'
- 46 N 87°01'17" E 2640.38'
- 47 S 00°47'30" E 636.23'
- 48 N 86°25'44" E 1323.97'
- 49 S 00°28'37" E 644.15'
- 50 S 64°14'21" W 198.79'



Note
This is a planning drawing and does not represent a formal boundary or feature survey.



Vincent J. Hoffmann
Professional Engineer
State of California
License No. 12717

July 2017
Attachment from the
Colusa County Water District
in a portion of
Section 5, Township 13 North, Range 2 West, M.D.M.
Colusa County, State of California
Prepared by
Compass Consulting Incorporated
11427 Madison Drive
Nevada City, California 95959

Sheet Legend
--- assessor parcel boundary
--- subject parcel boundaries
--- Colusa County Water District boundary
○ course end point
① metes and bounds course number

LAFCD File No. 2017-0001

Exhibit 2

A-6

Attachment No. 2017-0001
Attachment to Colusa County Water District

LEGAL DESCRIPTION
for
Henry Struckmeyer Et Ux

All that certain real property situated in a portion of Section 35, Township 13 North, Range 2 West M.D.M. within the County of Colusa, State of California, described as follows:

Beginning at the Southwest corner of Section 35;

Thence, (1) North, a distance of 5280.00' feet;

Thence, (2) East, a distance of 2640.00' feet;

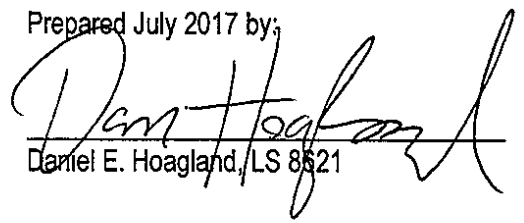
Thence, (3) South, a distance of 5280.00' feet;

Thence, (4) West, a distance of 2640.00' feet to the **Point of Beginning**

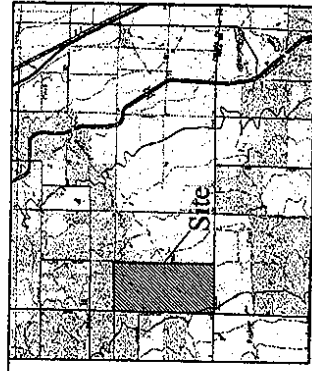
The above described parcel of land contains an area of 318.95 acres more or Less

For assessment purposes only. This description of land is not a legal property description as defined in the Subdivision Map Act and may not be used as the basis for an offer for sale of the land described

Prepared July 2017 by;


Daniel E. Hoagland, LS 8621



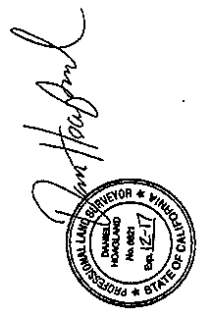
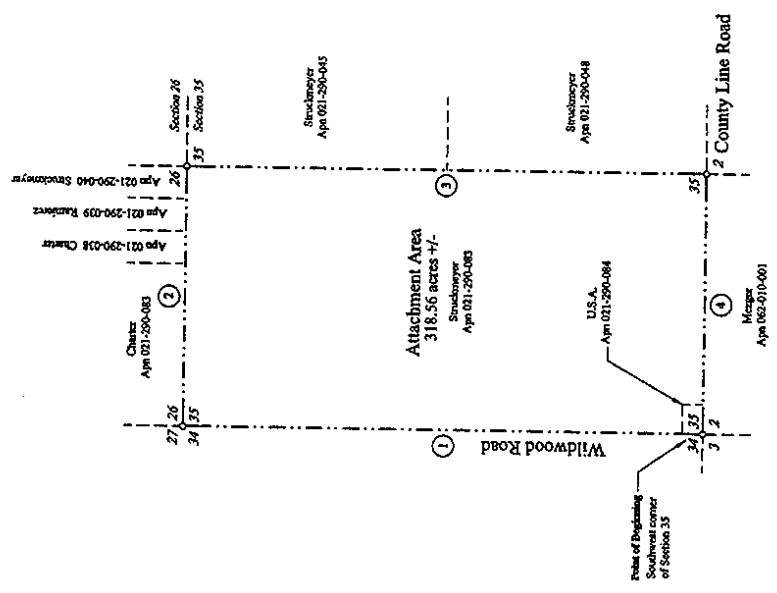


Location Map Not to Scale

Line Table

Course No.	Bearing	Distance
①	North	5280.00'
②	East	2640.00'
③	South	5280.00'
④	West	2640.00'

Exhibit 2

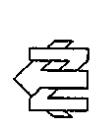


Note
This is a planning drawing and does not represent a formal boundary or feature survey.

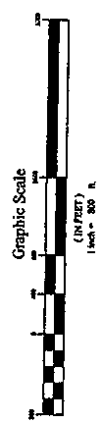
Sheet Legend

- assessor parcel boundary
- subject parcel boundaries
- Colusa County Water District boundary
- course end point
- ① notes and bounds course number

LAFCO File No. 2017-001
Attachment
From the
Colusa County Water District
in a portion of
Section 35, Township 13 North, Range 2 West, M.D.M.
Colusa County, State of California
Prepared By
Compass Consulting Incorporated
11427 Marjon Drive
Nevada City, California 95959



1" = 800'
all distances are in decimal
unless otherwise noted



A-7

Attachment No. 2017-0001
Attachment to from Colusa County Water District

LEGAL DESCRIPTION
for
Bruce Myers and Jeffery Charter

All that certain real property situated in a portion of Sections 6, Township 13 North, Range 2 West M.D.M. within the County of Colusa, State of California, described as follows:

Beginning at the Northwest corner of the South half of Section 15;

Thence, (1) North 89°56'06" East, a distance of 2146.37' feet;

Thence, (2) South 00°49'11" East, a distance of 1559.00' feet;

Thence, (3) South 00°49'11" East, a distance of 3074.51' feet;

Thence, (4) South 00°49'11" East, a distance of 670.83' feet;

Thence, (5) North 89°51'33" West, a distance of 2170.55' feet;

Thence, (6) North 00°43'50" East, a distance of 861.46' feet;

Thence, (7) South 89°52'38" East, a distance of 565.43' feet;

Thence, (8) North 00°19'48" West, a distance of 1805.09' feet;

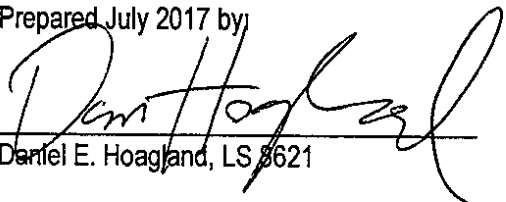
Thence, (9) North 89°52'38" West, a distance of 532.01' feet;

Thence, (10) North 00°43'32" East, a distance of 2665.68' feet to the **Point of Beginning**

The above described parcel of land contains an area of 248.98 acres more or Less

For assessment purposes only. This description of land is not a legal property description as defined in the Subdivision Map Act and may not be used as the basis for an offer for sale of the land described

Prepared July 2017 by


Daniel E. Hoagland, LS 8621



Apn 021-320-001, 014 and 031
Colusa County Water District
Job No. 16-141
Revised July 2017

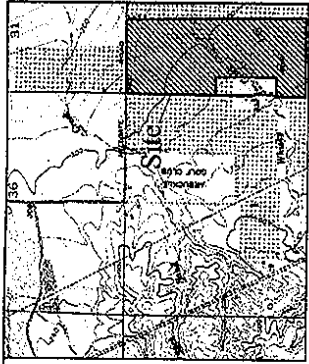
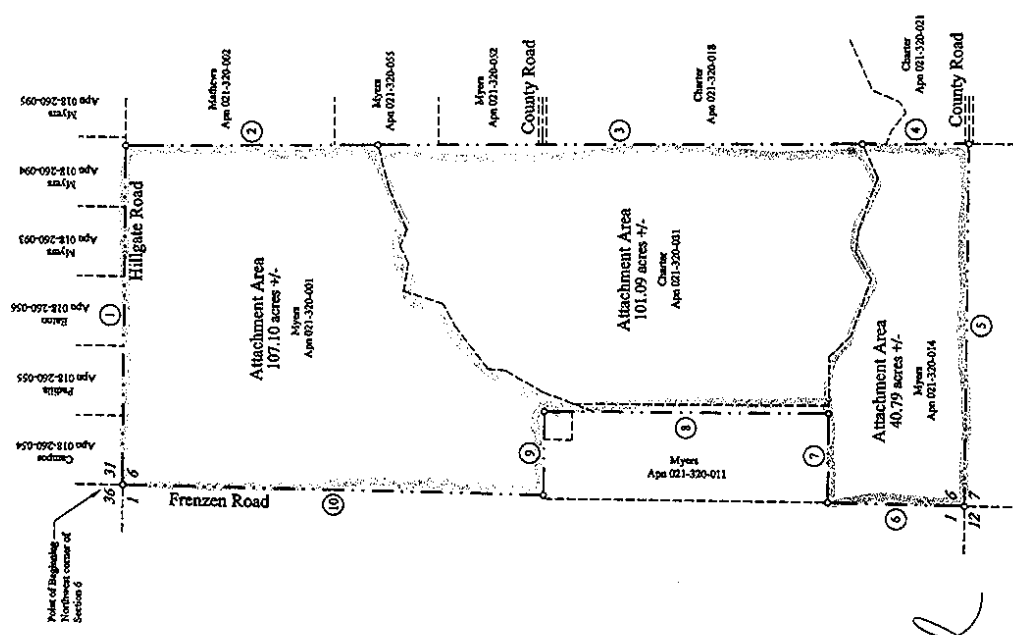


Exhibit 2



Line Table

Course No.	Bearing	Distance
①	N 89°56'08" E	2146.37
②	S 00°49'11" E	1559.00'
③	S 00°49'11" E	3074.51'
④	S 00°49'11" E	670.83'
⑤	N 89°51'33" W	2170.55'
⑥	N 00°43'50" E	861.46'
⑦	S 89°52'38" E	565.43'
⑧	N 00°19'48" W	1805.09'
⑨	N 89°52'38" W	532.01'
⑩	N 00°43'32" E	2685.68'

LAFCO File No. 2017-001
Attachment

from the
Colusa County Water District
in a portion of
Section 6, Township 13, North, Range 2 West, M.D.M.
Colusa County, State of California

Prepared by
Compass Consulting Incorporated
11427 Marion Drive
Nevada City, California 95959

July 2017

Sheet 1 of 1

M
1" = 500'
all distances are in decimal
unless otherwise noted



Sheet Legend

- assessor parcel boundary
- - - - - subject parcel boundaries
- - - - - Colusa County Water District boundary
- course end point
- ① metes and bounds course number

Note

This is a planning drawing and does not represent a formal boundary or feature survey.

Tom Taylor
PROFESSIONAL LAND SURVEYOR * WINDSOR *
DANIEL HANCOCK
No. 0071
Exp. 12-17
STATE OF CALIFORNIA

A-8

Attachment No. 2017-0001
Attachment to from Colusa County Water District

LEGAL DESCRIPTION
for
Don Peart Ranch

All that certain real property situated in a portion of Section 6, Township 12 North, Range 1 West M.D.M. within the County of Yolo, State of California, described as follows:

Beginning at the Northwest corner of Section 6;

Thence, (1) South 89°42'05" East, a distance of 1718.05' feet;

Thence, (2) South 02°44'00" East, a distance of 661.00' feet;

Thence, (3) South 08°55'00" East, a distance of 655.20' feet;

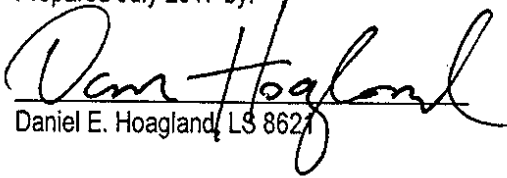
Thence, (4) North 89°13'43" West, a distance of 1807.80' feet;

Thence, (5) North 00°47'36" East, a distance of 1302.15' feet to the **Point of Beginning**

The above described parcel of land contains an area of 51.97 acres more or Less

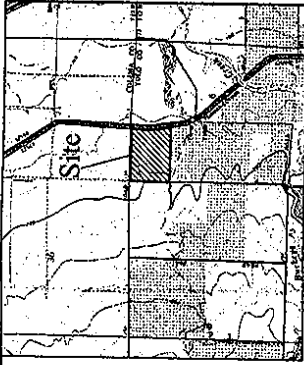
For assessment purposes only. This description of land is not a legal property description as defined in the Subdivision Map Act and may not be used as the basis for an offer for sale of the land described

Prepared July 2017 by:

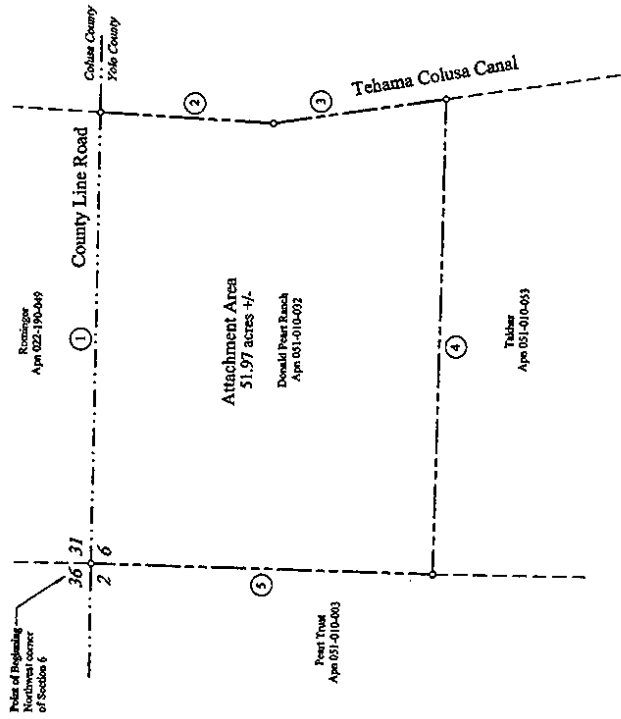

Daniel E. Hoagland, LS 8621



Apn 051-010-032
Colusa County Water District
Job No. 16-141
Revised July 2017



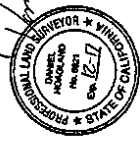
Location Map Not to Scale



Line Table

Course No.	Bearing	Distance
①	S 89°42'03" E	1718.05'
②	S 02°44'00" W	661.00'
③	S 08°55'00" E	653.20'
④	N 89°13'43" W	1807.80'
⑤	N 00°47'36" E	1302.15'

Handwritten signature



Note
This is a planning drawing and does not represent a formal boundary or feature survey.

- Sheet Legend**
- - - - - assessor parcel boundary
 - - - - - subject parcel boundaries
 - - - - - Colusa County Water District boundary
 - course end point
 - ① meters and bounds course number

LAPCO File No. 2017-0001
Attachment
from the
Colusa County Water District
in a portion of
Section 6, Township 12 North, Range 1 West, M.D.M.,
Yuba County, State of California

Prepared By
Compass Consulting Incorporated
11427 Marion Drive
Nevada City, California 95959