

SPHERE OF INFLUENCE  
COLUSA COUNTY RECLAMATION, DRAINAGE,  
FLOOD CONTROL AND LEVEE DISTRICTS

COLUSA LAFCO

Reclamation District 108  
Reclamation District 479  
Reclamation District 1004  
Reclamation District 2047  
Sacramento River Westside Levee District  
Cortina Creek Flood Control and Floodwater  
Conservation District  
Knights Landing Ridge Drainage District  
Colusa County Flood Control and Water  
Conservation District

Adopted:  
September 2, 2010

Resolution 2010-0009

## TABLE OF CONTENTS

	Page
1 INTRODUCTION .....	1
2 RECLAMATION DISTRICT 108 .....	5
3 RECLAMATION DISTRICT 479 .....	8
4 RECLAMATION DISTRICT 1004 .....	10
5 RECLAMATION DISTRICT 2047 .....	13
6 SACRAMENTO RIVER WESTSIDE LEVEE DISTRICT .....	16
7 CORTINA CREEK FLOOD CONTROL AND FLOODWATER CONSERVATION DISTRICT .....	18
8 KNIGHTS LANDING RIDGE DRAINAGE DISTRICT .....	20
9 COLUSA COUNTY FLOOD CONTROL AND WATER CONSERVATION DISTRICT .....	22
APPENDIX A ACREAGE FOR EACH DISTRICT. ....	25
REFERENCES .....	26
PREPARERS .....	27
DATA SOURCES FOR MAPS .....	28
MAP OF DISTRICTS .....	29

## **1 INTRODUCTION**

This Sphere of Influence (SOI) report is prepared for the reclamation, drainage, levee and flood control districts in Colusa County. Although these districts provide similar services they are not identical and they are formed under different laws. Even though the districts overlap to some extent; the recommendation is for the sphere of influence for most districts to remain the same as the existing district boundaries. Reclamation District (RD) 479 will have an SOI smaller than the District Boundary to allow a detachment. Colusa County Flood Control and Water Conservation District will also have an SOI smaller than the District to allow the District to detach the foothill area of the County. Information contained in this Sphere of Influence is current only as of the date of adoption.

### **1.1 LAFCO's Responsibilities**

LAFCO's in California are independent agencies created by the California Legislature in 1963 whose major purposes include encouraging the orderly formation of local governmental agencies and conserving and preserving natural resources. Statewide there are 58 LAFCOs working with nearly 3,500 governmental agencies (400+ cities, and 3,000+ special districts). Agency boundaries are often unrelated to one another and sometimes overlap at random, often leading to higher service costs to the taxpayer and general confusion regarding service area boundaries. LAFCO decisions strive to balance the competing needs in California for efficient services, affordable housing, economic opportunity, and conservation of natural resources.

LAFCOs are responsible for the following:

- 1) Coordinating logical and timely changes in local governmental boundaries
- 2) Conducting special studies that review ways to reorganize, simplify, and streamline governmental structure
- 3) Preparing a review of services called a Municipal Service Review
- 4) Preparing a Sphere of Influence

LAFCOs thereby determine the future “probable” boundary for each city and special district within each county. The Commission's efforts are directed toward seeing that services are provided efficiently and economically while agricultural and open-space lands are protected. Often citizens are confused as to what LAFCO's role is. LAFCOs do not have enforcement authority nor do they have the authority to initiate a city or district annexation or detachment proceeding. LAFCOs may initiate consolidation or dissolution proceedings; however, these proceedings are subject to the voter approval or denial.

The Legislature has given LAFCOs the authority to modify any proposal before it to ensure the protection of agricultural and open space resources, discourage urban sprawl and promote orderly boundaries and the provision of adequate services.

## **1.2 Sphere of Influence Requirements**

In determining the Sphere of Influence for each local agency, LAFCO must consider and prepare a written statement of determinations with respect to each of the following:

1. The present and planned land uses in the area, including agricultural and open space lands
2. The present and probable need for public facilities and services in the area
3. The present capacity of public facilities and adequacy of public services which the agency provides, or is authorized to provide
4. The existence of any social or economic communities of interest in the area if the commission determines that they are relevant to the agency

## **1.3 Possible Approaches to the Sphere of Influence**

LAFCO may recommend government reorganizations to particular agencies in the county, using the SOIs as the basis for those recommendations. Based on review of the guidelines of Colusa LAFCO as well as other LAFCOs in the State, various conceptual approaches have been identified from which to choose in designating an SOI. These seven approaches are explained below:

### **1. Coterminous Sphere:**

A Coterminous Sphere is a sphere for a city or special district that is the same as its existing boundaries. Most of the districts in this report will have a Sphere of Influence that is the same as the district boundary with the exception of RD 479 and the Colusa County Flood Control and Water Conservation District which will have Detachable Spheres.

### **2. Annexable Sphere:**

A sphere larger than the agency's boundaries identifies areas the agency is expected to annex. The annexable area is outside its boundaries and inside the sphere.

### **3. Detachable Sphere:**

A sphere that is smaller than the agency's boundaries identifies areas the agency is expected to detach. The detachable area is the area within the agency bounds but not within its sphere. This is the recommendation for RD 479 and for the Colusa County Flood Control and Water Conservation District.

### **4. Zero Sphere:**

A zero sphere indicates the affected agency's public service functions should be reassigned to another agency and the agency should be dissolved or combined with one or more other agencies.

5. Consolidated Sphere:

A consolidated sphere includes two or more local agencies and indicates the agencies should be consolidated into one agency.

6. Limited Service Sphere:

A limited service sphere is the territory included within the SOI of a multi-service provider agency that is also within the boundary of a limited purpose district which provides the same service (e.g., fire protection), but not all needed services. Territory designated as a limited service SOI may be considered for annexation to the limited purpose agency without detachment from the multi-service provider.

This type of SOI is generally adopted when the following conditions exist:

- a. The limited service provider is providing adequate, cost effective and efficient services.
- b. The multi-service agency is the most logical provider of the other services.
- c. There is no feasible or logical SOI alternative.
- d. Inclusion of the territory is in the best interests of local government organization and structure in the area.

Government Code §56001 specifically recognizes that in rural areas it may be appropriate to establish limited purpose agencies to serve an area rather than a single service provider, if multiple limited purpose agencies are better able to provide efficient services to an area rather than one service district.

Moreover, Government Code Section §56425(i), governing sphere determinations, also authorizes a sphere for less than all of the services provided by a district by requiring a district affected by a sphere action to “establish the nature, location, and extent of any functions of classes of services provided by existing districts” recognizing that more than one district may serve an area and that a given district may provide less than its full range of services in an area.

7. Sphere Planning Area:

LAFCO may choose to designate a sphere planning area to signal that it anticipates expanding an agency’s SOI in the future to include territory not yet within its official SOI.

#### **1.4 SOI Update Process**

LAFCO is required to establish SOIs for all local agencies and enact policies to promote the logical and orderly development of areas within the SOIs. Furthermore, LAFCO must update those SOIs every five years. In updating the SOI, LAFCO is required to conduct a municipal service review (MSR) and adopt related determinations.

This report identifies preliminary SOI policy alternatives and recommends SOI options for the reclamation districts and other similar districts. Development of actual SOI update will involve additional steps as follows:

- 1) Opportunity for public input at a Colusa LAFCO public hearing
- 2) Consideration of changes requested by LAFCO Commissioners

LAFCO must notify affected agencies 21 days before holding a public hearing to consider the SOI and may not update the SOI until after that hearing. The Colusa LAFCO Executive Officer must issue a report including recommendations on the SOI amendments and updates under consideration at least five days before the public hearing.

### **1.5 SOI Amendments and CEQA**

LAFCO has the discretion to limit SOI updates to those that it may process without unnecessarily delaying the SOI update process or without requiring its funding agencies to bear the costs of environmental studies associated with SOI expansions. Any local agency or individual may file a written request for an SOI amendment. The request must state the nature of and reasons for the proposed amendment, and provide a map depicting the proposal.

LAFCO may require the requester to pay a fee to cover LAFCO costs, including the costs of appropriate environmental review under CEQA. LAFCO may elect to serve as lead agency for such a review, may designate the proposing agency as lead agency, or both the local agency and LAFCO may serve as co-lead agencies for purposes of an SOI amendment. Local agencies are encouraged to consult with LAFCO staff early in the process regarding the most appropriate approach for the particular SOI amendment under consideration.

Certain types of SOI amendments are usually exempt from CEQA review. Examples are SOI expansions that include territory already within the bounds or service area of an agency, SOI reductions, and zero SOIs.

SOI expansions for limited purpose agencies that provide services (e.g., fire protection, levee protection, cemetery, and resource conservation) needed by both rural and urban areas are typically not considered growth-inducing and are likely exempt from CEQA. Similarly, SOI expansions for districts serving rural areas (e.g., irrigation water) are typically not considered growth-inducing.

Remy et al. write

*In City of Agoura Hills v. Local Agency Formation Commission (2d Dist.1988) 198 Cal.App.3d480, 493-496 [243 Cal.Rptr.740] (City of Agoura Hills), the court held that a LAFCO's decision to approve a city's sphere of influence that in most respects was coterminous with the city's existing municipal boundaries was not a "project" because such action did not entail any potential effects on the physical environment.<sup>1</sup>*

---

<sup>1</sup> Remy, Michael H., Tina A. Thomas, James G. Moose, Whitman F. Manley, Guide to CEQA, Solano Press Books, Point Arena, CA, February 2007, page 111.

## **2 RECLAMATION DISTRICT 108**

### **2.1 Reclamation District 108 Background**

Reclamation District 108 (RD 108) was established in 1870 and delivers water from the Sacramento River to nearly 48,000 acres of land within northern Yolo County and southern Colusa County. Reclamation District 108 is one of the first reclamation districts formed in California that is still in operation. One of the District's first projects was construction of the Tisdale Weir on the east side of the Sacramento River to provide relief from flooding to the levees on the west side of the Sacramento River.

Early in its history the District also addressed the impact of the Knights Landing Ridge (an area of high ground created by overflow silt deposits from Cache Creek) on drainage in the Colusa Basin. As a result of a court case, a cut through the Knights Landing Ridge was made to allow water to flow into the Yolo Bypass when flood waters accumulated against the Ridge in the lower Colusa Basin.

A significant portion of Reclamation District 108 overlaps with the service area of the Knights Landing Ridge Drainage District (Yolo County). The primary levee that Reclamation District 108 is responsible for is the eastern levee along the Colusa Back Borrow Pit.<sup>2</sup>

### **2.2 RD 108 Contact Information**

The contact information for Reclamation District 108 is as follows:

Lewis Bair, General Manager Reclamation District 108  
975 Wilson Bend Road  
P.O. Box 50, Grimes, CA 95950

Phone: 530-437-2221

Fax: 530-437-2248

Email address: [lbair@rd108.org](mailto:lbair@rd108.org) or [rd108@rd108.org](mailto:rd108@rd108.org)

Website: [www.rd108.org](http://www.rd108.org)

---

<sup>2</sup> Yolo County LAFCO, "Municipal Service Review and Sphere of Influence Study Yolo County Public Water and Reclamation Districts," Dudek & Associates, Inc. March 2005, page 56.

### **2.3     SOI for Reclamation District 108**

The Sphere of Influence for Reclamation District 108 should remain coterminous as the District Boundary. The District coordinates services with both the Sacramento River Westside Levee District and the Knights Landing Ridge Drainage District but it is not feasible to merge these districts.

#### **2.3.1    *SOI Determinations on Present and Planned Land Use for the RD 108 Area***

- 1-1]    Population growth is not expected within RD 108 because the area is used for farming and is zoned for agriculture.

#### **2.3.2    *SOI Determinations on Facilities and Services: Present and Probable Need for Reclamation District 108***

- 2-1]    RD 108 has been providing reclamation services for over 125 years and the need for RD 108 will continue.

#### **2.3.3    *SOI Determinations on Public Facilities Present and Future Capacity for Reclamation District 108***




- 3-1]    The District will continue to maintain and update its facilities to provide irrigation and drainage service in an economical and environmentally sound manner.

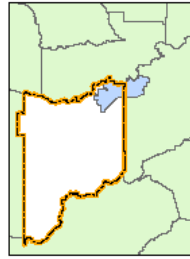
#### **2.3.4    *SOI Determinations on Social or Economic Communities of Interest Reclamation District 108***

- 4-1]    The District shares administration with the Sacramento River Westside Levee District and the Knights Landing Ridge Drainage District.
- 4-2]    The District belongs to the Power and Water Resources Pooling Authority (PWRPA).
- 4-3]    Services provided by the District are land-based therefore the community served consists of the landowners.



Reclamation  
District 108

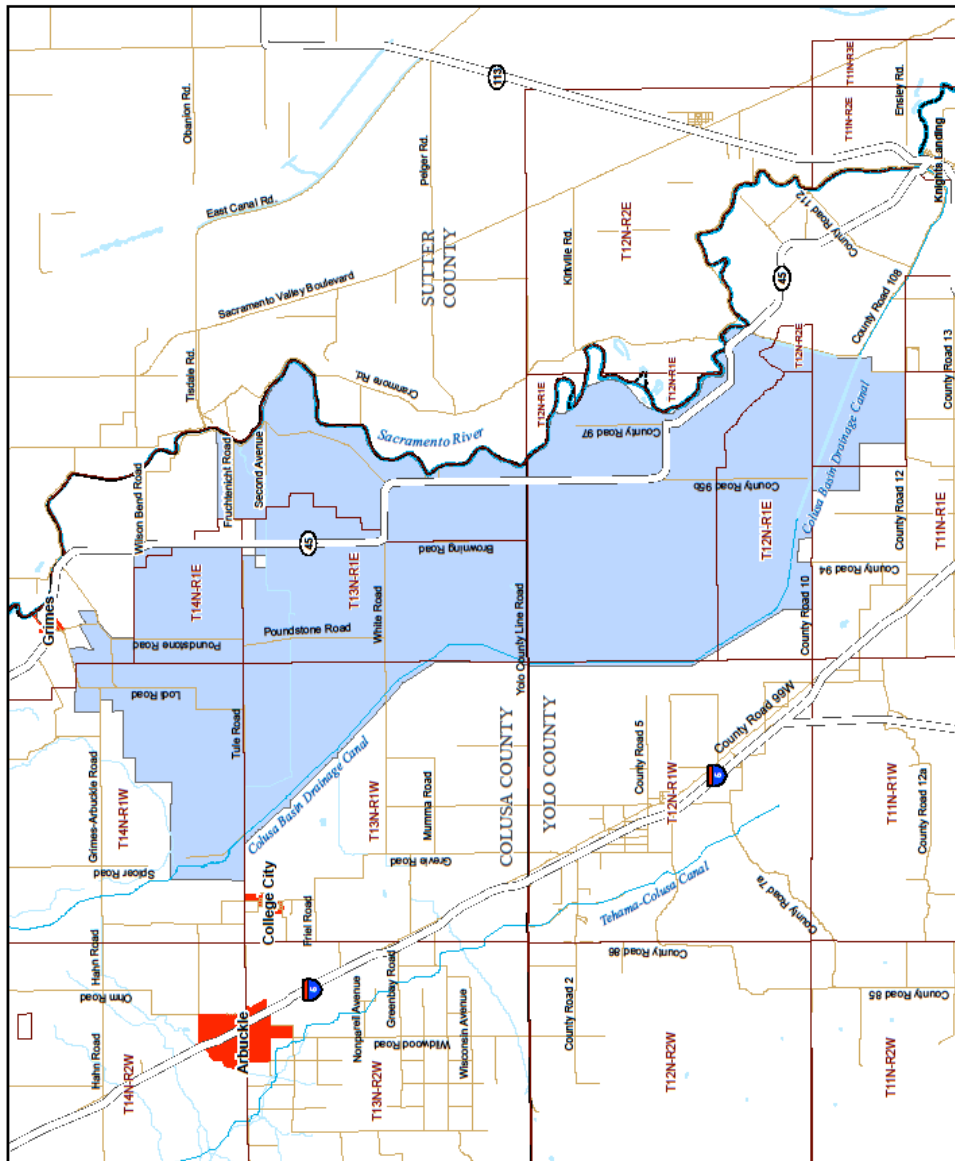
 Reclamation District 108 District Boundary and Sphere of Influence  
 Public Land Survey Township and Range  
 County Boundaries



Location in County



District Boundaries from U.S. Bureau of Reclamation, 2009  
Map Produced by ChicoMapWorlds LLC, October 2009



### **3 RECLAMATION DISTRICT 479**

#### **3.1 Reclamation District 479 Background**

Reclamation District 479 is only concerned with drain water and makes sure that all of the drain water enters the RD 2047 Canal. There was a detachment from RD 479 in 2003 called the Wallace Detachment of 237 acres (LAFCO resolution 2003-06, Detached on December 17, 2003).

#### **3.2 Reclamation District 479 Contact Information**

The contact information for Reclamation District 479 is as follows:

Shelley Miller, Secretary RD 479,  
Phone 458-4849 (wed)

E-Mail: colusadrainmwc@rocketmail.com

Mail: Reclamation District 479  
730 Harris Street, Colusa CA 95932

#### **3.3 SOI for Reclamation District 479**

The Sphere of Influence for Reclamation District 479 will be smaller than the boundary of the District to allow for a proposed detachment. This District is smaller and has a more limited function than adjacent districts.

##### **3.3.1 *SOI Determinations on Present and Planned Land Use for the RD 479 Area***

1-1] Land within the RD 497 area is zoned for agriculture and little or no population growth is expected.

##### **3.3.2 *SOI Determinations on Facilities and Services: Present and Probable Need for Reclamation District.479***

2-1] The need for Reclamation District 479 will continue.

##### **3.3.3 *SOI Determinations on Public Facilities Present and Future Capacity for Reclamation District 479***

3-1] The District has minimal infrastructure and relies on the RD 2047 drain to convey drainage water to the Sacramento River.

##### **3.3.4 *SOI Determinations on Social or Economic Communities of Interest for Reclamation District No. 479***

4-] Landowners of the District are the economic community of interest.



## **4 RECLAMATION DISTRICT 1004**

### **4.1 Reclamation District 1004 Background**

Reclamation District 1004 operates irrigation conveyances with its 23,000 acre jurisdiction primarily in Colusa County with some land Glenn County. The District is located east of the Sacramento River with its eastern boundary formed by Butte Creek along the Colusa-Sutter County Line. Land in the District is farmed primarily to rice.<sup>3</sup>

The District provides growers with water that is drawn from the Sacramento River at the Princeton pumping plant to the northwest of the District. Once irrigation water is used, it drains from fields within the District generally moving to the south and/or east towards Butte Creek. Water is blocked from draining into Butte Creek by weirs and risers and is recirculated through the District for reuse. Butte Creek flows into the Sacramento River at the southern border of the District approximately 5.5 miles downstream from the City of Colusa.

In addition to agricultural water delivery, the District provides water for habitat maintenance to the National Audubon Society (NAS) and numerous other landowners that have established habitat as part of Natural Resources Conservation Service (NRCS) cost-share programs. Ducks Unlimited (DU) and the California Waterfowl Association (CWA) have and continue to fund several District facilities, including habitat areas consisting of permanent ponds, seasonal wetlands, millet fields, and uplands that provide wintering habitat and resting areas for ducks, geese and shorebirds. The wetlands produce waterfowl food and the upland areas provide habitat for geese upland birds and other wildlife species. Habitat land area and water requirements vary from year to year.<sup>4</sup> Typical values are shown below:

<b>Summary of Established Habitat Land and Water Requirements Reclamation District 1004</b>		
<b>Name</b>	<b>Size Acres</b>	<b>Water Requirement (Ac-Ft)</b>
Private Land Owners	2880	8000
National Audubon Society	480	1335
<b>TOTAL</b>	<b>3360</b>	<b>9335</b>

The District employs a staff of water operators who release water from District conveyances into grower's fields through gates and valves. The water operators ensure that enough water is flowing in the laterals to meet demand. Gates and valves in the delivery system are owned, operated and maintained by the landowners. Each field within the District and service area has a metered floodgate to determine water usage.<sup>5</sup>

The District has remained the same except that in 1981, 417 acres were detached.<sup>6</sup>

<sup>3</sup> Reclamation District 1004, "Use of Copper and Acrolein to Control Aquatic Weeds in Water Conveyances, CEQA Mitigated Negative Declaration" August 11, 2004, Prepared by Blankinship & Associates, Inc., 2940 Spafford St. Ste 110, Davis Ca 95616, Phone: 530.757.0941, Fax: 530.757.0940, www.envtox.com.

<sup>4</sup> Reclamation District 1004, "Use of Copper and Acrolein to Control Aquatic Weeds in Water Conveyances, CEQA Mitigated Negative Declaration" August 11, 2004, Prepared by Blankinship & Associates, Inc., 2940 Spafford St. Ste 110, Davis Ca 95616, Phone: 530.757.0941, Fax: 530.757.0940, www.envtox.com.

<sup>5</sup> Reclamation District 1004, "Use of Copper and Acrolein to Control Aquatic Weeds in Water Conveyances, CEQA Mitigated Negative Declaration" August 11, 2004, Prepared by Blankinship & Associates, Inc., 2940 Spafford St. Ste 110, Davis Ca 95616, Phone: 530.757.0941, Fax: 530.757.0940, www.envtox.com.

<sup>6</sup> Colusa LAFCO, Resolution 81-1.

## **4.2 Reclamation District 1004 Contact Information**

Reclamation District 1004  
134 5<sup>th</sup> Street  
Colusa Ca 95932

Cameron "Kelly" Boyd  
Phone: 530-458-7459, 682-0050

Fax: 530-458-4276  
E-Mail: [rd1004@colusanet.com](mailto:rd1004@colusanet.com)

## **4.3 SOI for Reclamation District No. 1004**

The Sphere of Influence for Reclamation District No. 1004 should remain coterminous with the District Boundary. This District is on the East side of the Sacramento River and does not conflict or overlap with other similar districts.

### ***4.3.1 SOI Determinations on Present and Planned Land Use for the RD 1004 Area***

- 1-1] Population growth will be minimal within the Reclamation District 1004.
- 1-2] Land within the District is zoned for agriculture.

### ***4.3.2 SOI Determinations on Facilities and Services: Present and Probable Need for Reclamation District No. 1004***

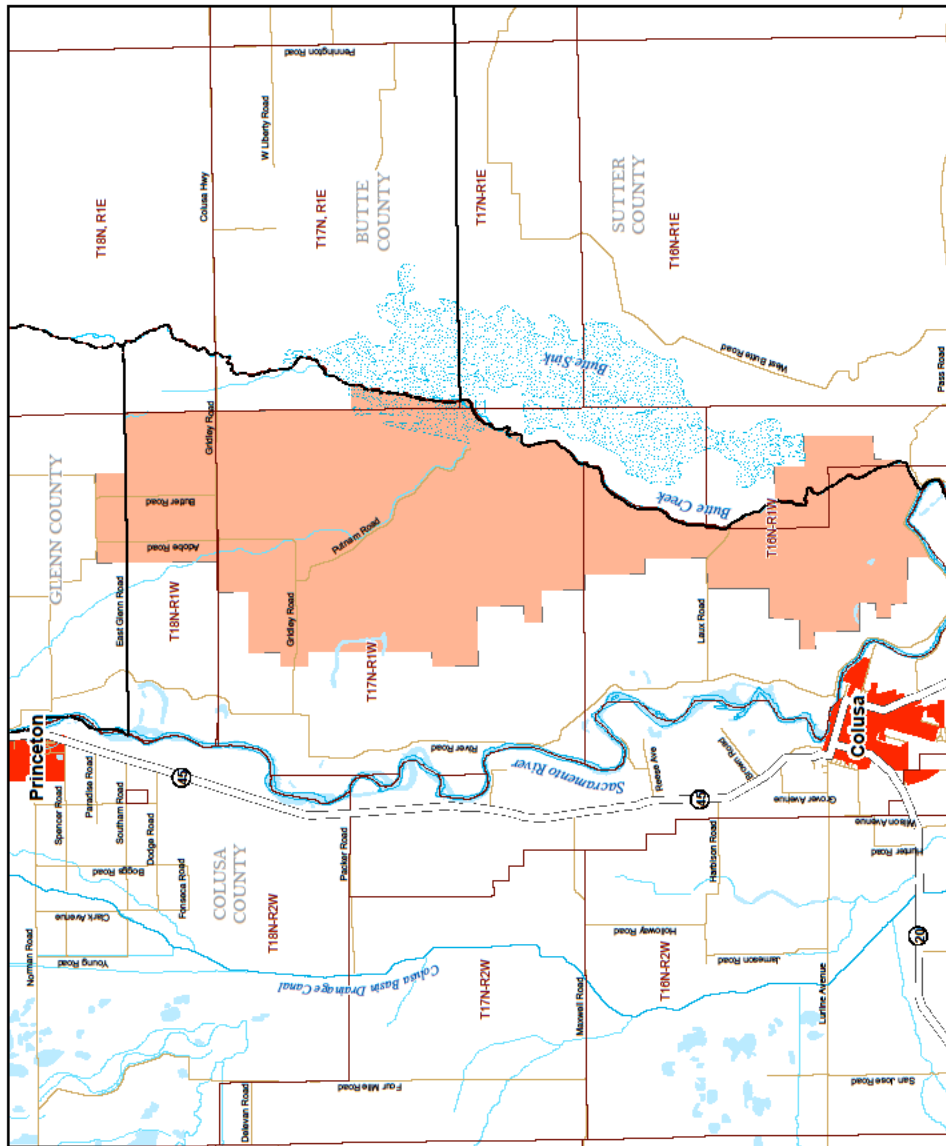
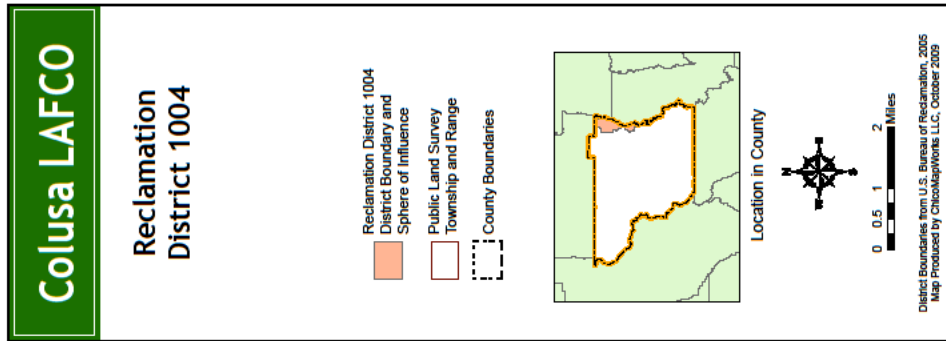
- 2-1] The infrastructure of the District has been improved with the Drumheller Slough project.
- 2-2] The District has a three year plan to maintain and improve the infrastructure.
- 2-3] Reclamation District No.1004 is needed for agriculture and for habitat maintenance.

### ***4.3.3 SOI Determinations on Public Facilities Present and Future Capacity for Reclamation District No. 1004***

- 3-1] Reclamation District No.1004 has adequate facilities and capacity for the present and the future.

### ***4.3.4 SOI Determinations on Social or Economic Communities of Interest for Reclamation District No. 1004***

- 4-1] The landowners form an economic community of interest for RD 1004.



## **5 RECLAMATION DISTRICT 2047**

### **5.1 Reclamation District 2047 Background**

Reclamation District 2047 was formed in 1919. This District constructed the Colusa Basin Drain to deal with local flooding in the Colusa Basin. The Drain was originally conceived to operate as a bypass similar to the Sutter and Yolo Bypasses but now the Colusa Basin Drain conveys both summer agricultural drainage water (primarily from rice fields) and winter flows to the Knights Landing outfall gates on the Sacramento River in Yolo County.<sup>7</sup>

The District is approximately 30 miles in length, with an average width of 11.5 miles and covers an area of nearly 230,000 acres.<sup>8</sup>

### **5.2 Reclamation District 2047 Contact Information**

The contact information for Reclamation District 2047 is as follows:

Reclamation District 2047  
c/o William Baber  
20 Fairview Circle, Chico CA 95928      Phone: 530-899-8573

### **5.3 SOI for Reclamation District 2047**

The Sphere of Influence for Reclamation District 2047 should remain coterminous with the District Boundary. The District provides an important service for a large area.

#### **5.3.1 SOI Determinations on Present and Planned Land Use for the Reclamation District No. 2047 Area**

- 1-1] The population projection for the area within the Reclamation District 2047 is no population growth.
- 2-2] The population projections for adjacent towns and cities are found in the appropriate county or city general plans. Population growth within the district boundaries will be minimal.
- 2-3) The District should maintain an active relationship with county and city planning departments in the area to make sure that the District goals are considered when land use changes and land use regulations are made.

<sup>7</sup> "Draft Sacramento Valley Integrated Regional Water Management Plan", July 12, 2005, page 27.

<sup>8</sup> Reclamation District No. 2047, "Brief History and Responsibilities", May 31, 1996, page 1.

**5.3.2 *SOI Determinations on Facilities and Services: Present and Probable Need for Reclamation District No. 2047***

- 2-1) There is a need for Reclamation District No.2047 and the need will continue into the future.

**5.3.3 *SOI Determinations on Public Facilities Present and Future Capacity for Reclamation District No. 2047***

- 3-1] The District facilities are adequate and the capacity will be maintained into the future.

**5.3.4 *SOI Determinations on Social or Economic Communities of Interest for Reclamation District No. 2047***

- 4-1) The community is made up of the landowners and farmers within the District.





## **6 SACRAMENTO RIVER WESTSIDE LEVEE DISTRICT**

### **6.1 Sacramento River Westside Levee District Background**

The Sacramento River West Side Levee District is responsible for maintenance of the west side of the levee along the Sacramento River from Colusa to Knights Landing. The District contracts with RD 108 for staff.

### **6.2 Sacramento River Westside Levee District Contact Information**

The Sacramento River Westside Levee District Contact Information is as follows:

Cathy Busch, Secretary

Sacramento River Westside Levee District

PO Box 50, Grimes CA 95950

Phone: 530-437-2221

### **6.3 SOI for Sacramento River Westside Levee District**

The Sphere of Influence for the Sacramento River Westside Levee District should coterminous as the Boundary of the District. Even though the District overlaps with RD 108 and Knights Landing Ridge Drainage District in some areas the boundaries of these districts are different and the formation laws and functions are not the same as the Sacramento River Westside District. The districts do have functional cooperation.

#### **6.3.1 SOI Determinations on Present and Planned Land Use for the Sacramento River Westside Levee District Area**

1-1] Population growth in the Sacramento River Westside Levee District will be minimal.

1-2] Land within the District is zoned and planned for agriculture.

#### **6.3.2 SOI Determinations on Facilities and Services: Present and Probable Need for the Sacramento River Westside Levee District**

2-1] There is an on-going need for the Sacramento River Westside Levee District.

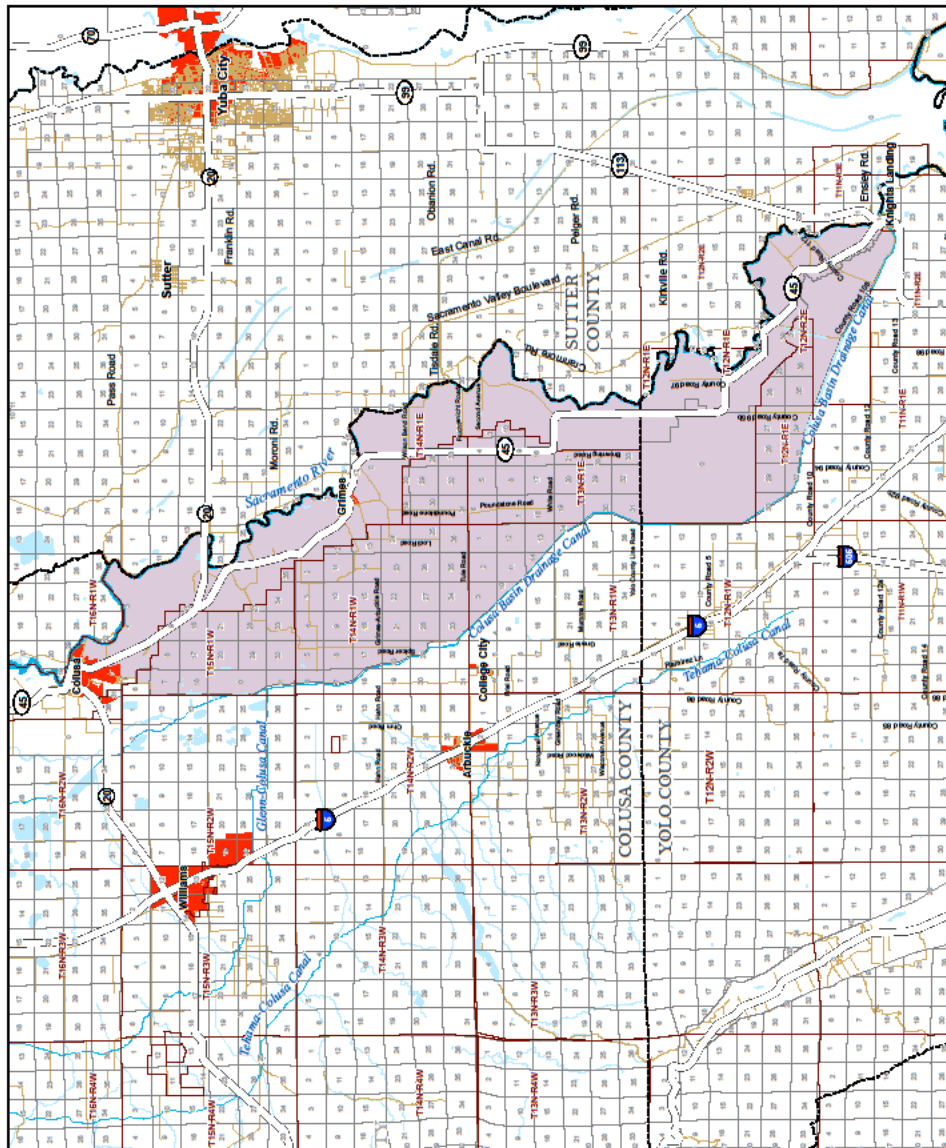
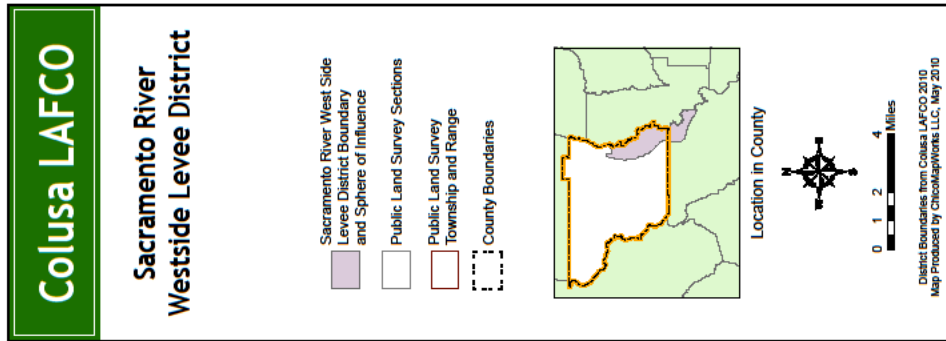
#### **6.3.3 SOI Determinations on Public Facilities Present and Future Capacity Sacramento River Westside Levee District**

3-1] The facilities are adequate for the present and future needs of the District.

3-2] The District shares administration with RD 108 for greater efficiency.

#### **6.3.4 SOI Determinations on Social or Economic Communities of Interest for Sacramento River Westside Levee District**

4-1] The benefits of maintenance of the Sacramento River Westside Levee extend beyond the landowners to the larger Colusa County community.



## **7 CORTINA CREEK FLOOD CONTROL AND FLOODWATER CONSERVATION DISTRICT**

### **7.1 Cortina Creek Flood Control and Floodwater Conservation District Background**

The Cortina Creek Flood Control and Floodwater Conservation District was formed in 1965 according to the Floodwater Conservation Law of 1931. The District was inactive for about forty years but has recently become active again. The banks of Cortina Creek have been maintained by the individual landowners along the Creek but there is a need for certain improvements and repairs to be made..<sup>9</sup>

#### **7.1.2 Contact Information**

Contact Information for Cortina Creek Flood Control and Floodwater Conservation District is as follows: Christy Scofield, Director  
PO Box 375, Arbuckle, California 95912 Phone: 530-476-2323

### **7.2 SOI for Cortina Creek Flood Control and Floodwater Conservation District**

The Sphere of Influence for the Cortina Creek Flood Control and Floodwater Conservation District should remain coterminous with the District Boundary. This District has recently become active again with a separate Board from the Board of Supervisors and they are working to improve flood control in the area.

#### **7.3.1 SOI Determinations on Present and Planned Land Use for the Cortina Creek Flood Control and Floodwater Conservation District Area**

- 1-1] Population growth within the Cortina Creek Flood Control and Water Conservation District will be minimal.
- 1-2] Land within the District is planned and zoned for agriculture.

#### **7.3.2 SOI Determinations on Facilities and Services: Present and Probable Need for the Cortina Creek Flood Control and Floodwater Conservation District**

- 2-1] The District has not been consistently active but hopes to be proactive in the future.

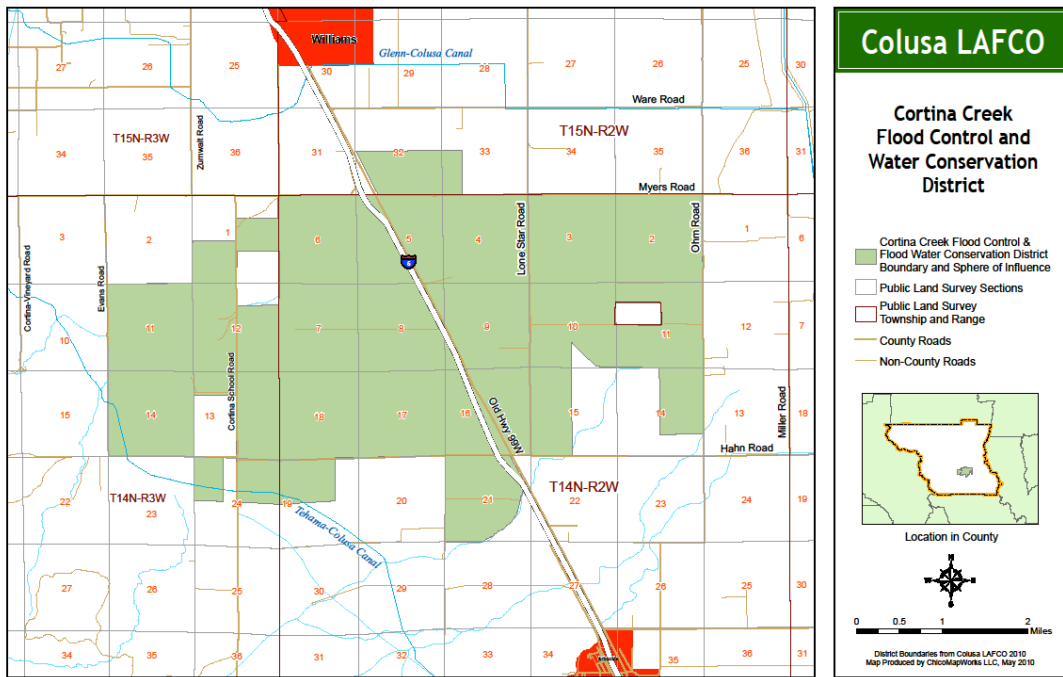
#### **7.3.3 SOI Determinations on Public Facilities Present and Future Capacity for the Cortina Creek Flood Control and Floodwater Conservation District**

- 3-1] The District has recently determined that there is a need for more facilities now and in the future.

#### **7.3.4 SOI Determinations on Social or Economic Communities of Interest for the Cortina Creek Flood Control and Floodwater Conservation District**

- 4-1] The economic community of interest for the Cortina Creek Flood Control and Floodwater Conservation District has the potential to be larger than just the landowners within the District.

<sup>9</sup> Cortina Creek Flood Control and Floodwater Conservation District, Christy Scofield, Director, Phone: 530-476-2323, September 10, 2009.



## **8 KNIGHTS LANDING RIDGE DRAINAGE DISTRICT**

### **8.1 Knights Landing Ridge Drainage District Background**

The Knights Landing Ridge Drainage District has 72,000 acres and no Population.<sup>10</sup> The District shares administration with Reclamation District 108 and Sacramento River Westside Levee District.

### **8.2 Knights Landing Ridge Drainage District Contact Information**

The contact information for the Knights Landing Ridge Drainage District is as follows:

Knights Landing Ridge Drainage District  
PO Box 50, Grimes CA 95950

Phone 437-2221 or 437-2248

### **8.3 SOI for Knights Landing Ridge Drainage District**

The Sphere of Influence for the Knights Landing Ridge Drainage District should remain coterminous with the District Boundary. The District has functional cooperation with Reclamation District 108. Because the Knights Landing Ridge Drainage District has more acreage in Yolo County than in Colusa County the Yolo LAFCO has jurisdiction. This information is included to obtain a more complete picture of the districts in Colusa County.

#### **8.3.1 SOI Determinations on Present and Planned Land Use for the Knights Landing Ridge Area**

- 1-1] Land within the Knights Landing Ridge Drainage District is zoned for agriculture and is not likely to experience population growth.

#### **8.3.2 SOI Determinations on Facilities and Services: Present and Probable Need for the Knights Landing Ridge Drainage District**

- 2-1] The Knights Landing Ridge Drainage District is needed now and will be needed in the future.

#### **8.3.3 SOI Determinations on Public Facilities Present and Future Capacity for Knights Landing Ridge Drainage District**

- 3-1] The Knights Landing Ridge Drainage District has adequate capacity to maintain drainage for the area.

#### **8.3.4 SOI Determinations on Social or Economic Communities of Interest for Knights Landing Ridge Drainage District**

- 4-1] The Knights Landing Ridge Drainage District encompasses a large economic community along the Sacramento River in Colusa and Yolo counties.

---

<sup>10</sup> Yolo County Local Agency Formation Commission  
625 Court Street, Room 202, Woodland, California 95695, MUNICIPAL SERVICE REVIEW and SPHERE OF INFLUENCE STUDY Yolo County Public Water and Reclamation Districts, *Prepared by:* Dudek and Associates, Inc., 605 Third Street, Encinitas, California 92024, March 2005, p.2.





## **9 COLUSA COUNTY FLOOD CONTROL AND WATER CONSERVATION DISTRICT**

### **9.1 Colusa County Flood Control and Water Conservation District Background**

The Colusa County Flood Control and Water Conservation District was formed by an act of the California State Legislature on September 20, 1983. The District originally included the entire County of Colusa; however, the area of the County on the East side of the Sacramento River (42,499 acres) was detached in 1987 by Colusa LAFCO Resolution 87-04. The Colusa County Board of Supervisors is the Board of Directors for the District.

The District started to establish two Zones of Benefit, one north of the City of Colusa along the west side of the Sacramento River and one including part of the City of Colusa and additional land to the south. However, no tax assessment was ever enacted and the zones of benefit were never recorded with the State Board of Equalization.<sup>11</sup> Since no tax assessment was established for this District, the Board of Supervisors must fund any activities with General Fund money. The Board of Supervisors did construct a levee west of Colusa. The County did have severe flooding problems in 1998 but has not had the financial resources to deal with these issues.<sup>12</sup>

### **9.2 SOI for Colusa County Flood Control and Water Conservation District**

The Sphere of Influence for the Colusa County Flood Control and Water Conservation District should remain coterminous with the previously adopted Sphere which shows only that land within the Colusa Drainage Basin within the Sphere, excluding the foothill area of the County. Even though the District has no tax rate at this time they may need to have one in the future.

#### **9.2.1 SOI Determinations on Present and Planned Land Use for the Colusa County Flood Control and Water Conservation District Area**

- 1-1] Population growth within the Colusa County Flood Control and Water Conservation District will be the same as that for Colusa County.

#### **9.2.2 SOI Determinations on Facilities and Services: Present and Probable Need for the Colusa County Flood Control and Water Conservation District**

- 2-1] The District has not been active and has no facilities.
- 2-2] If the District does develop a flood control program, only that land subject to flooding would benefit.

<sup>11</sup> Colusa LAFCO, Correspondence from Jan Mariano to Gary Plunkett, February 27, 1985.

<sup>12</sup> Colusa County Public Works Department, Jon Wrynski, Phone: 530-458-0470, October 5, 2009.

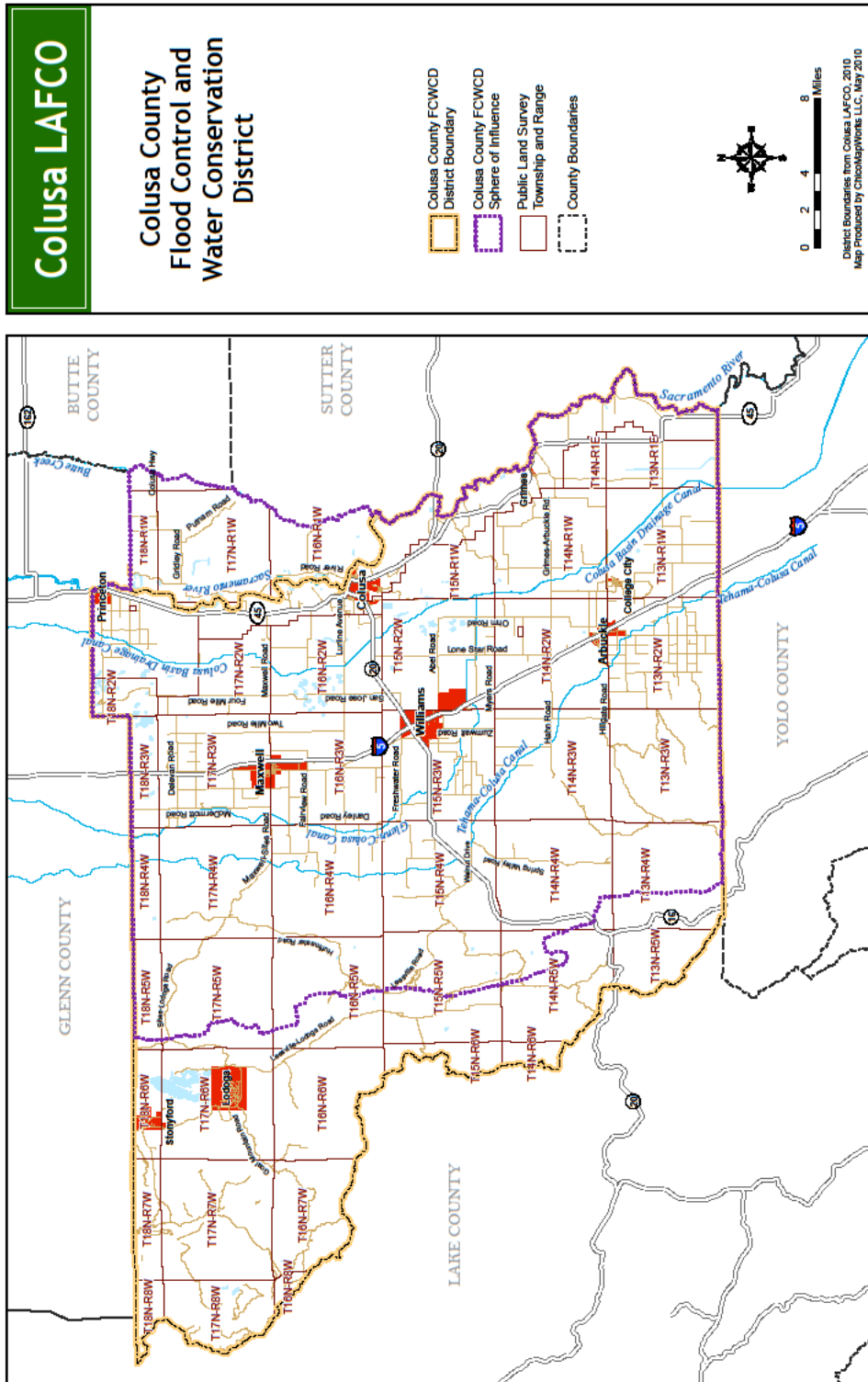


**9.2.3 *SOI Determinations on Public Facilities Present and Future Capacity for the Colusa County Flood Control and Water Conservation District***

- 3-1] There may be a need for the District in the future. The District could be used for a variety of functions. Of particular importance is to assist and manage new levee improvements to an acceptable level for certification by FEMA to protect urban uses from 100 year floods
- 3-2] The District may be able to construct facilities with grant funding. The District should take the lead in securing funding and construction of levee improvements. Maintenance of such improvements should rest with existing levee districts.

**9.2.4 *SOI Determinations on Social or Economic Communities of Interest for the Colusa County Flood Control and Water Conservation District***

- 4-1] The community of interest is the area within the Colusa Basin Drain within the County of Colusa, especially in areas subject to flooding.



**APPENDIX A ACREAGE FOR EACH DISTRICT**

<b>District</b>	<b>Acres</b>	<b>County</b>
Reclamation District No. 108	34,313.48	Colusa
Reclamation District No. 108	<u>24,506.16</u>	Yolo
Reclamation District No. 108 Total	58,819.64	
Reclamation District No. 479	6,132.54	Colusa
Reclamation District No. 1004	22,717.22	Colusa
Reclamation District No. 1004	<u>472.83</u>	Glenn
Reclamation District No. 1004 Total	23,190.05	
Reclamation District No. 2047	135,058.07	Colusa
Reclamation District No. 2047	<u>97,766.06</u>	Glenn
Reclamation District No. 2047 Total	232,824.13	
Sacramento Westside Levee District	74,568.44	Colusa
Sacramento Westside Levee District	<u>30,738.93</u>	Yolo
Sacramento Westside Levee District Total	105,307.37	
Cortina Creek Flood Control and WC District	12,923.38	Colusa
Knights Landing Ridge Drainage District	43,399.23	Yolo
Knights Landing Ridge Drainage District	<u>29,919.60</u>	Colusa
Knights Landing Ridge Drainage District Total	73,318.83	

## **REFERENCES**

City of Colusa, General Plan, October 2007.

Colusa County Auditor's Office, Janet Dawley, Phone: 530-458-0400, October 14, 2009.

Colusa County, Board of Supervisors Office, Yolanda Tirado, E-Mail:  
[cocolusa@countyofcolusa.org](mailto:cocolusa@countyofcolusa.org), April 22, 2009.

Colusa County, *Colusa County General Plan Final*, January 13, 1989.

Colusa County Public Works Department, Jon Wrynski, Phone: 530-458-0470, October 5, 2009.

Colusa LAFCO, Correspondence from Jan Mariano to Gary Plunkett, February 27, 1985.

Colusa LAFCO, Cortina Creek Flood Control and Floodwater Conservation District Formation,  
July 20, 1965.

Colusa LAFCO, Reclamation District 479 Sphere of Influence Study, 1984.

Colusa LAFCO, RD1004 Sphere of Influence Study, 1984.

Colusa LAFCO, Sacramento River Westside Levee District Sphere of Influence Study, 1984.

Cortina Creek Flood Control and Floodwater Conservation District, Christy Scofield, Director,  
Phone: 5430-476-2323, September 10, 2009.

"Draft Sacramento Valley Integrated Regional Water Management Plan", July 12, 2005, page 27.

Knights Landing Ridge Drainage District, Phone 530-437-2221, September 30, 2009.

Northern California Water Association (NCWA), "Draft Sacramento Valley Integrated Regional  
Water Management Plan", July 12, 2005, page 1.

Reclamation District 479, Shelley Miller, Secretary, E-Mail: [colusadrainmwc@rocketmail.com](mailto:colusadrainmwc@rocketmail.com),  
September 28, 2009.

Reclamation District 108, E-mail from Cathy Busch, Secretary, [cbusch@rd108.org](mailto:cbusch@rd108.org), October 17,  
2008.

Reclamation District, 108:<http://rd108.org/>, 2009.

Reclamation District 108, Minutes of the Regular Meeting of the Board of Trustees, January 17,  
2008.

RD 1004, Draft Mitigated Negative Declaration/Finding of No Significant Impact Drumheller  
Slough and White Mallard Outfall Project, State Lead Agency: Reclamation District No.  
1004, June 26, 2000.

Reclamation District 1004, "Use of Copper and Acrolein to Control Aquatic Weeds in Water  
Conveyances, CEQA Mitigated Negative Declaration" August 11, 2004, Prepared by  
Blankinship & Associates, Inc., 2940 Spafford St. Ste 110, Davis Ca 95616, Phone:  
530.757.0941, Fax: 530.757.0940, [www.envtox.com](http://www.envtox.com).

Reclamation District No. 2047, "Brief History and Responsibilities", May 31, 1996

Remy, Michael H., Tina A. Thomas, James G. Moose, Whitman F. Manley, Guide to CEQA, Solano Press Books, Point Arena, CA, February 2007, page 111.

Yolo County Local Agency Formation Commission, Knights Landing Ridge Drainage District, Sphere of Influence Study, January 14, 1985.

Yolo County Local Agency Formation Commission, 625 Court Street, Room 202, Woodland, California 95695, Municipal Service Review And Sphere of Influence Study Yolo County Public Water and Reclamation Districts, *Prepared by:* Dudek and Associates, Inc., 605 Third Street, Encinitas, California 92024, March 2005.

### ***PREPARERS***

Colusa LAFCO, John Benoit, Executive Officer  
PO Box 2694, Granite Bay CA 95746  
Phone: 916-797-6003 [johnbenoit@surewest.net](mailto:johnbenoit@surewest.net)

Christy Leighton, Planning Consultant  
555 East Willow Street, Willows CA 95988  
Phone: 530-934-4597 [christyleighton@sbcglobal.net](mailto:christyleighton@sbcglobal.net)

ChicoMapWorks  
333 Main Street, Suite 200  
Chico CA 95928  
Phone: 530-345-0755 [jstolen@chicomapworks.com](mailto:jstolen@chicomapworks.com)

### Data Sources for Maps

Name		Acres	Source
Reclamation No. 108	District	58,819.64	Downloaded from <a href="http://casil.ucdavis.edu/casil/">http://casil.ucdavis.edu/casil/</a> (the GIS data source for CA) Federal water district boundaries from US Bureau of Reclamation 2009
Reclamation No. 479	District	6,132.54	Digitized from paper map and fax provided by Reclamation District 479.
Reclamation No. 1004	District	23,190.05	Digitized from U.S. Bureau of Reclamation 2004 pdf map found online at <a href="http://www.usbr.gov/mp/">www.usbr.gov/mp/</a>
Reclamation No. 2047	District	232,824.13	Digitized from paper map, Colusa County LAFCO 1985, verified by Glenn-Colusa Irrigation District, Ben Pennock, District Engineer, 11-02-09.
Cortina Creek Flood Control and Floodwater Control District		12,923.38	Digitized from paper map, Colusa LAFCO 1985
Knights Landing Ridge Drainage District		73,318.83	Digitized from paper map, Colusa LAFCO 1985
Sacramento Westside Levee District		105,307.37	Digitized from paper map, Colusa LAFCO 1985

